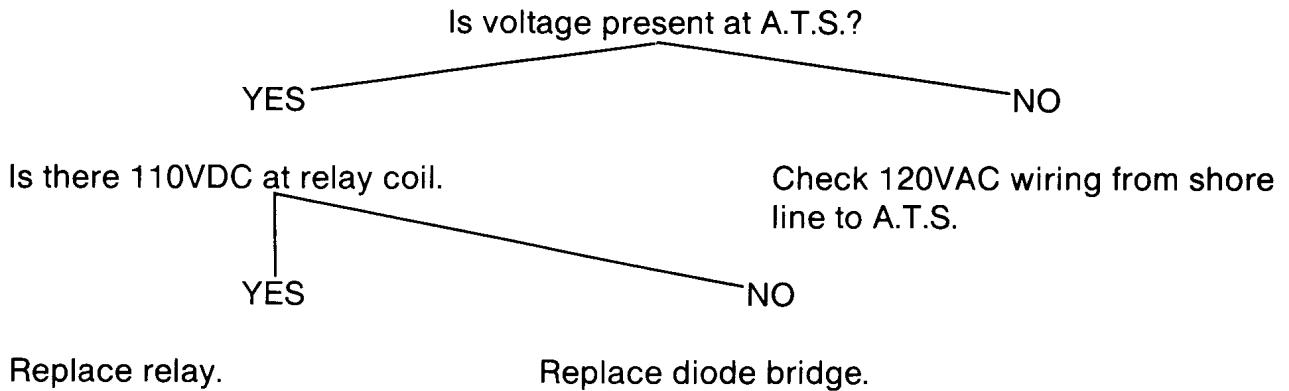
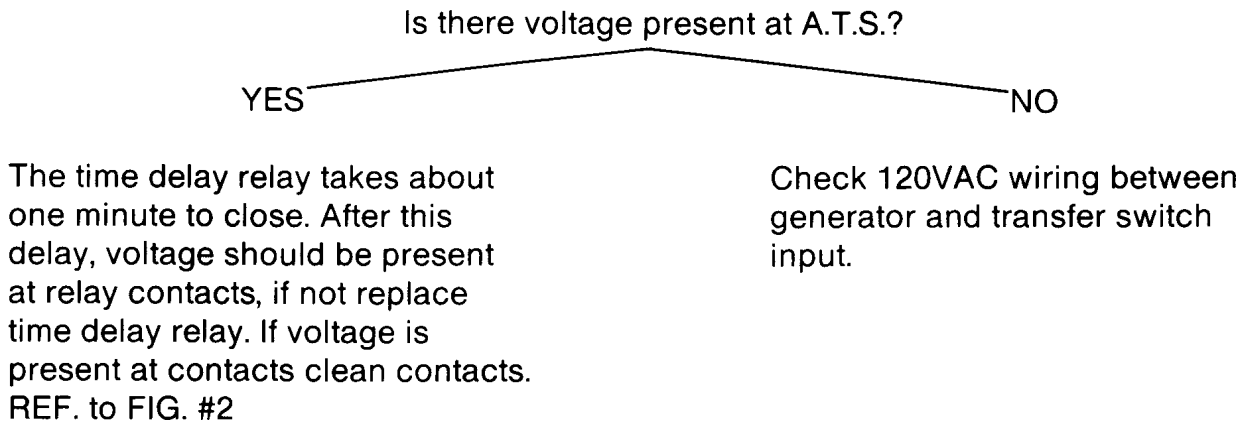


COACHES WITH AUTOMATIC TRANSFER SWITCHES

PROBLEM: No AC power in coach when shore line is plugged in.



PROBLEM: A.T.S. does not switch over to generator.



LINE PRIORITY A.T.S. RELAY

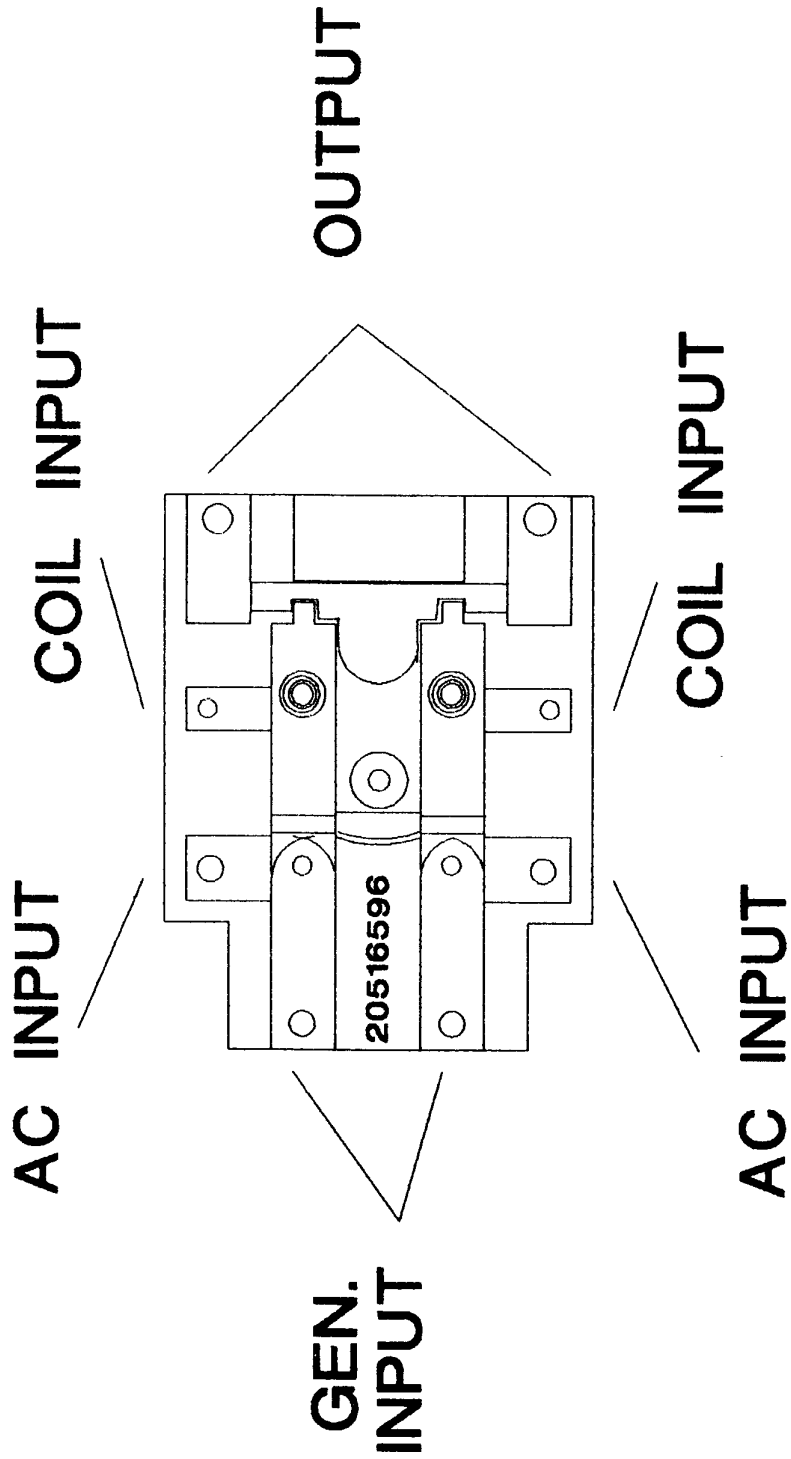
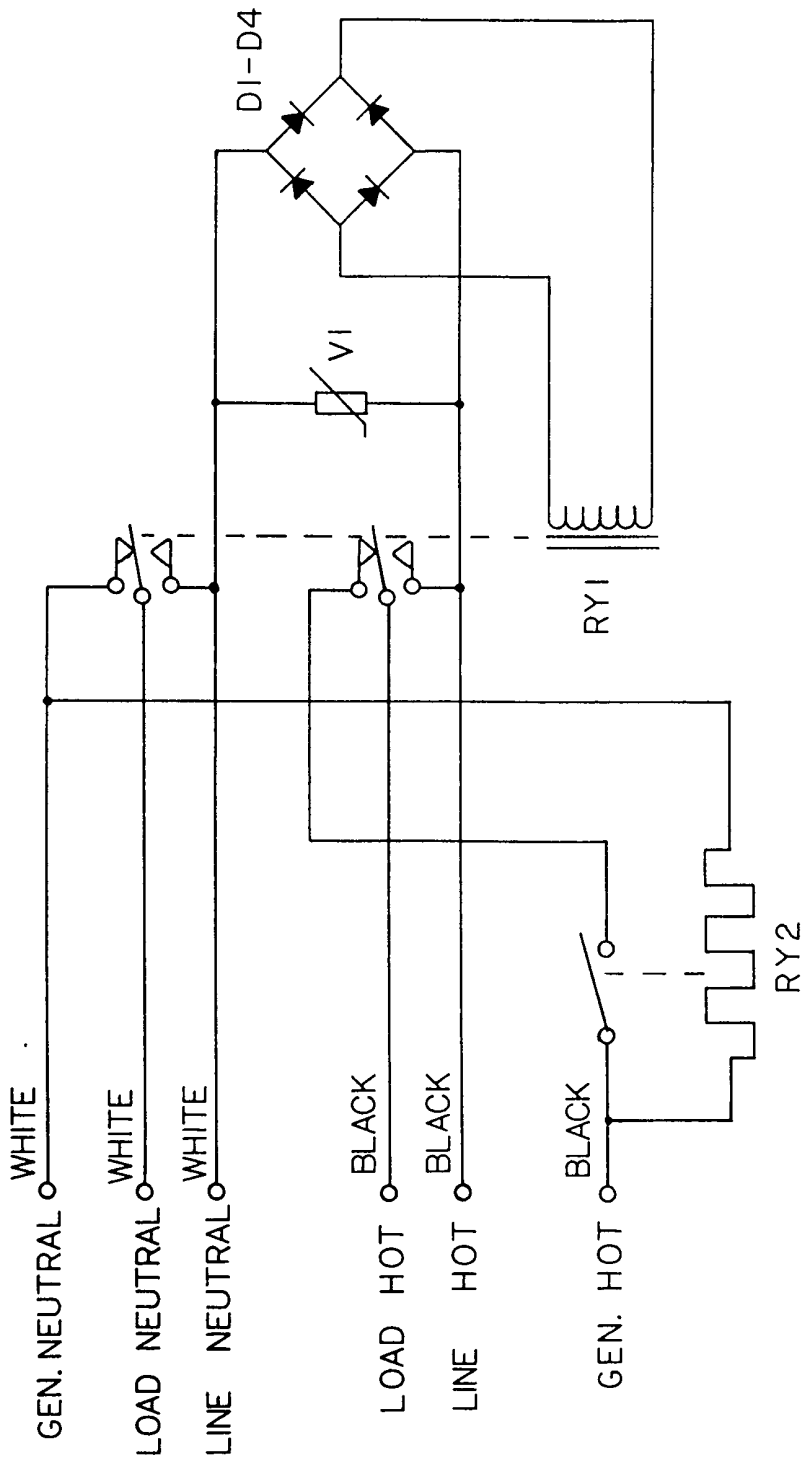


FIGURE #2

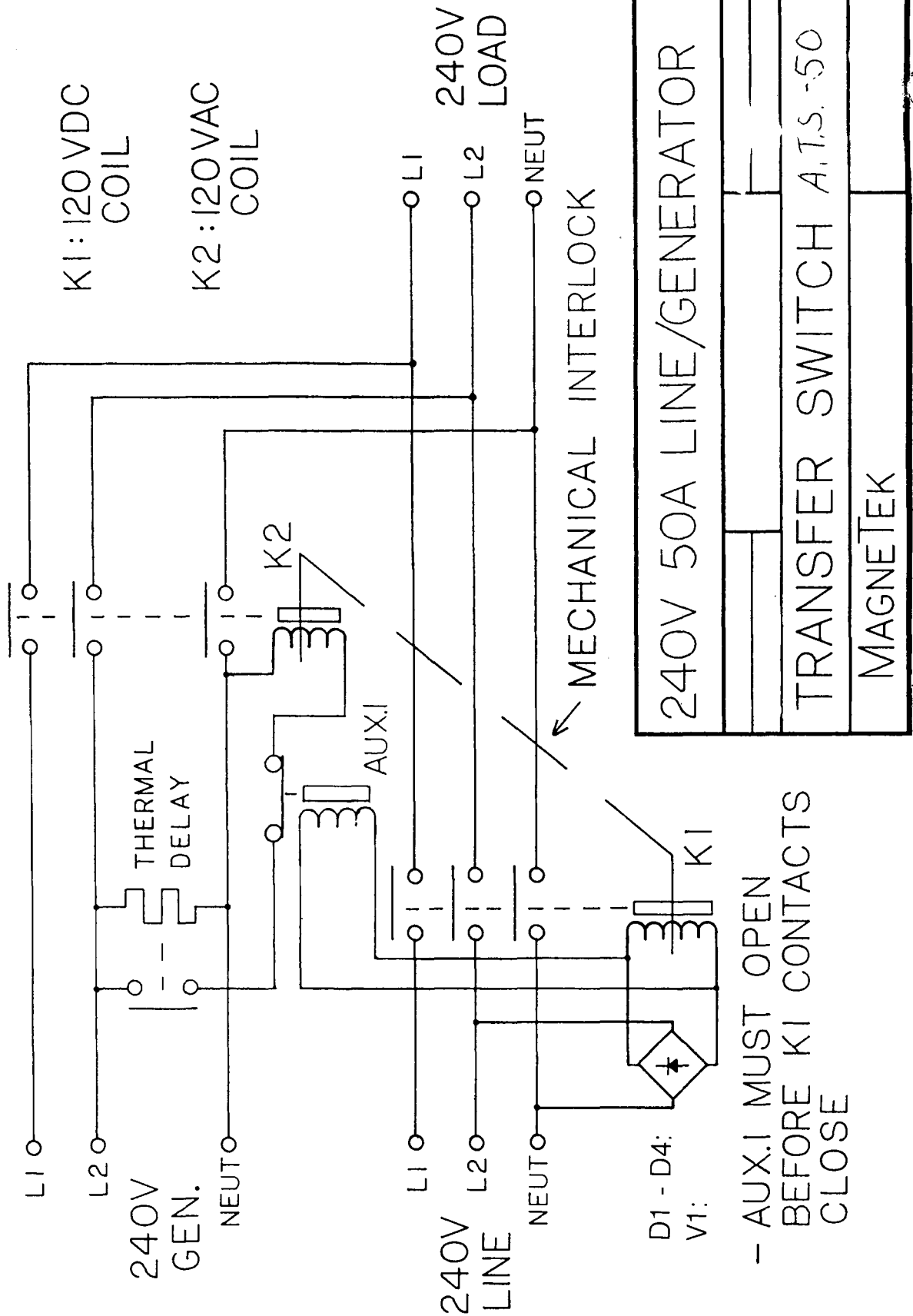
Handwritten marks and a vertical line of tick marks on the right side of the page.



PARTS LIST

- D1 - D4 IN4007 PR-18506647
- V1 130VAC M.O.V. PR-18006758
- RY1 DPDT RELAY PR-20516596
- RY2 THERMAL RELAY PR-20516595

LINE GENERATOR TRANSFER SWITCH	
6300 SERIES AND RV 80 OPTION 'A'	
A.T.S. - 30	



240V 50A LINE/GENERATOR
 TRANSFER SWITCH A.T.S.-50
 MAGNETEK

- AUX.1 MUST OPEN
 BEFORE K1 CONTACTS
 CLOSE

PARTS LIST A.T.S. 100 240VAC 50 AMPS

D1-D4: 1N4007 - PR-18506647
V1: M.O.V. - PR-18518005
RY1: CONTACTOR - PR-20516291
RY2: TIMER RELAY - PR-20516027

NOTE: K1 & K2 ARE PART OF RY1