

Table of Contents

Section I – Two Wire Monitor System

Page 3	2 Wire Monitor Panel Systems Overview
Page 3	Components of the 2 Wire System
Page 4	2 Wire System Installation
Pages 4 & 5	Operational Overview – Multi Switch System
Page 5	Operational Overview – Multi Light Systems
Page 6	Troubleshooting Basics
Pages 7, 8, 9	Common Field Problems

Section 2 – Conventional Monitor Systems

Page 10	Conventional Monitor Panel Systems Overview
Page 10	Components of the Conventional System
Page 11 & 12	Operational Overview – Multi Switch System
Page 12	Operation Overview – Multi Light System
Page 12	Troubleshooting Basics
Pages 13, 14, 15	Common Field Problems
Appendix A	2 Wire Monitor System Component Identification, Wiring Diagrams, Installation Diagrams
Appendix B	Conventional Monitor System Component Identification, Wiring Diagrams, Installation Diagrams

Two Wire Monitor Panel Systems – An Overview

The “two wire” monitor system is commonly used to monitor holding tank levels, battery charge levels, and LP gas levels in recreational vehicles. This technology offers the consumer a convenient method for determining status of the above from a central location. It offers the RV manufacturer improved installation over conventional systems due to the reduced number of wires required. Monitor systems are commonly located in a wall mount panel or furnished as part of the galley range exhaust hood. Regardless of the location or style of monitor, the basic purpose and function of all two wire monitor systems are the same.

Components of the Two Wire System

Monitor Panel – The monitor panel consists of a metal or plastic chassis to which the printed circuit board, switching, and printed overlay are attached. The panel can be wall mounted with screws or mounted to the range exhaust hood using various methods. Each monitor panel manufactured by Ventline has been designed to provide for specific functions as specified by the RV manufacturer. Holding tank levels are typically displayed in ¼ or 1/3 tank increments. The monitor panel can be equipped with a single lighted status display and individual test switches for each status point monitored (multi-switch) or with a single test switch and individual lighted status displays for each status point being monitored (multi-light).

Wiring Harness – The wiring harness is an engineered assembly of wires and connectors which provides the monitor panel with 12 volt DC power as well as inputs from those items being monitored. Wiring harnesses are typically color-coded. The wiring diagram prepared for each Ventline monitor panel will reflect the color-coding specified by the RV manufacturer.

Tank Resistor harness – The tank resistor harness combines color-coded wiring with encapsulated electronic components. Each tank resistor harness will have a wire dedicated to each tank level being monitored as well as a common wire, which provides an input to the circuit board through the wiring harness.

Holding Tank Sensors – The holding tank sensors are located in the sidewall of the holding tanks at various locations corresponding with the levels being monitored. Sensors may be permanent or removable. The relative location of these stainless steel sensors will vary with the configuration of the holding tank.

Fresh Water Probe – The fresh water probe is a specially designed probe for use with potable water. It consists of various lengths of stainless steel wire, which are suspended through a threaded fitting from the top of the fresh water tank.

Please refer to the drawings shown in Appendix A for identification of system components, typical wiring configurations, and suggested installation methods. Ventline manufactures a wide variety of monitor panel systems to OEM specifications. The drawing shown in Appendix A are intended to show general system configuration only. Your system may contain more or less features based on specific OEM requirements. If you require technical information or repair parts, please contact your RV dealer or RV manufacturer for assistance in identification of your specific system.

Installation

To insure proper operation, each monitor system must be installed in accordance with the appropriate wiring diagram and tank sensor location diagram. The 12-volt power source must be the vehicle battery or original from the filtered/battery side of the AC/DC power converter. Undesirable line noise present on the unfiltered side the AC/DC power will cause a number of unpredictable malfunctions.

Operation Overview – Two Wire Multi Switch Systems

Fresh Water Status Switch – (commonly labeled “Fresh Tank”, “Fresh” and “Water Level”): Pressing and holding this switch will display the liquid level of the fresh water holding tank on the monitor panel display.

Holding Tank #1 Status Switch – (commonly labeled “Black Tank”, “Black”, and “HT1”): Pressing and holding this switch will display the liquid level of the sewage holding tank on the monitor panel display.

Holding Tank #2 Status Switch – (commonly labeled “Gray Tank”, “Gray” and “HT2”): Pressing and holding this switch will display the liquid level of the wastewater holding tank on the monitor panel display. The source of this wastewater is typically a sink or shower. Some recreational vehicles will be equipped with multiple wastewater holding tanks and the monitor panels will be marked accordingly.

LP Gas Status Switch – (commonly labeled “LP”): Pressing and holding this switch will display the fuel level of the LP gas tank(s) on the monitor panel display.

Battery Condition Status Switch – (commonly labeled “Battery” or “Battery Charge”) “ Pressing and holding this switch will display the charge level of the battery(s) on the monitor panel display. Charge increments are displayed as nominal voltage levels or as “good, fair, low” as specified by the RV manufacturer.

Water Pump Switch – This switch is used to operate the water pump system. Pressing this switch to the “on” position will energize the water pump and illuminate a red indicator light labeled “pump” or “pump on”. Pressing this switch to the off position will de-energize the water pump and turn off the indicator light.

Water Heater Switch – This switch is used to operate the water heater. Pressing this switch to the “on” position will begin the water heater ignition sequence. During the ignition sequence, the indicator light labeled “pilot” or “pilot out” will flash on and off. This light will turn off when ignition is complete. As additional hot water is required, the water heater will automatically re-light as evidenced by the flashing indicator light. If water heater ignition is not successful, the light will remain on, indicating a fault condition. If ignition is not successful, place the switch in the off position for 30 seconds before repeating the ignition sequence. If the fault condition continues, consult the RV manufacturer or the water heater manufacturer for assistance in troubleshooting. The water heater switch should remain in the “on” position as long as hot water is desired.

Hood Light Switch – This switch will be present on range hood mounted panels only. Pressing this switch to the “on” position will illuminate the light furnished as part of the range hood. Pressing the switch to the off position will turn the light off.

Operation Overview – Continued

Hood Fan Switch – This switch will be present on range hood mounted panels only. Used for operating the exhaust fan furnished with the range hood, this switch is offered in three different forms based on the hood model.

Single speed rocker switch – When pressed to the “on” position, this switch will energize the single speed exhaust fan. On some models, this switch will also energize a remote mounted exterior vent, causing it to open during fan operation. Pressing the switch to the “off” position will de-energize the fan (and close the exterior vent if so equipped).

Dual speed rocker switch – This three-position switch will energize the exhaust fan to high or low speed, with the center position being “off”. On some models this switch will also energize a remote mounted exterior vent, causing it to open during fan operation. Pressing the switch to the center “off” position will de-energize the fan (and close the exterior vent if so equipped).

Dual speed lever switch – This three-position switch will energize the exhaust fan to high or low speed, with the far left position being “off”. This switch will also open a remote mounted exterior vent during fan operation. Moving the switch to the left “off” position will de-energize the fan and close the exterior vent.

Caution: Never operate the range burners without energizing the range hood exhaust fan.

Operation Overview – Two Wire Multi Light Systems

The two-wire multi light system provides for the same functions as the multi switch system, but does so using a single “test” switch and multiple lighted displays. When the “test” switch is pressed the status of all functions being monitored will be displayed simultaneously.

Other features such as the water pump, water heater and range hood controls will operate as previously described in the section titled Operational Overview – Two Wire Multi Switch Systems.

Troubleshooting – All Two Wire Systems

When troubleshooting a problem with a Ventline monitor system, always remember that there are four basic system components to consider:

- 1) The monitor panel assembly, which includes the circuit board, lights and wiring.
- 2) The wiring harness, which includes the wires and connectors that connect the monitor panel to 12 volt DC power, ground, tank resistor harnesses, LP sensors and switching.
- 3) The tank resistor harness, which include the wires, connectors and encapsulated electronic components.
- 4) The holding tank sensors and fresh water probes.

Troubleshooting, Continued

In many cases a malfunction of one of the above components will be reflected in another, which can result in misdiagnosis of the actual problem. Ventline recommends a consistent, methodical approach to troubleshooting in order to diagnose and correct the problem with the minimum investment in time and resources.

Prior to troubleshooting any monitor panel problem, verify the following:

- 1) You are in possession of the correct wiring diagram for the specific system requiring diagnostics.
- 2) The 12-volt power source is present and originates from the battery or the filtered side of the power converter.
- 3) The chassis ground is present and has a good connection through the negative side of the battery.
- 4) The monitor panel assembly has been inspected and is free from damage. Check for broken wires, loose components and connectors.
- 5) The wiring harness is connected properly and is free from damage.
- 6) The tank resistor harnesses are connected properly and are free from damage.
- 7) The tank level sensors and fresh water probes are properly located and are free from damage.
- 8) All wiring is done in accordance with the wiring diagram.
- 9) All of the above components are accessible during troubleshooting.

After the above is verified, proceed with troubleshooting the system. Common problems are listed starting on the following page, followed by individual troubleshooting sections devoted to each problem.

Common Field Problems

Inaccurate holding tank level readings.

Some or all holding tank level lights not coming on.

Some or all holding tank level lights continuously on.

LP gas levels not reading properly.

Range hood light not functioning (hood mounted panels only).

Range hood fan not functioning (hood mounted panels only).

Inaccurate Holding Tank Readings

The accuracy of two wire holding tank monitoring systems can be adversely affected by dirty tanks, unusual mineral content in the water, or improper holding tank probe location. These conditions can cause the monitoring system to have oversensitive (reads higher than actual level) or under-sensitive (reads lower than actual level) readings.

Oversensitive readings: Over-sensitive readings can occur as a result of scum buildup on the tank walls, abnormally high mineral content in the water, or incorrectly located holding tank probes. In these situations, the monitoring system indicates higher levels than are actually present in the holding tank. Certain cleaning products and food by-products can build up on the inside walls of the holding tanks producing a layer of scum that can cause the monitoring system to read higher than the actual level. To correct this problem, the holding tanks should be cleaned periodically (consult dealer or tank manufacturer for cleaning instructions). If the problem persists after cleaning the holding tank, the ground probe can be moved farther away from the other tank probes. The increased distance between the ground probe and the other probes will decrease the sensitivity of the monitoring system.

Undersensitive readings – Under-sensitive readings can occur if the mineral content of the water is abnormally low or if the holding tank probes are located incorrectly. In this case, the monitoring system indicates lower levels than are actually present in the holding tank. This problem can be corrected by moving the ground probe closer to the other probes. Moving the ground probe closer increases the sensitivity of the monitoring system.

The Ventline Adjustaboard™: In response to requests from the field for a means to adjust monitor sensitivity without relocating holding tank probes, Ventline has developed the Ventline Adjustaboard™ (patent pending). This adjustable circuit board allows for field adjustments to monitor sensitivity. As tank conditions or water mineral content changes, the monitor circuitry may be made more or less sensitive as required. Please see Appendix A for adjustment instructions.

Some or All Holding Tank Level Lights Not Coming On

Possible Cause	Corrective Action
No Power	Verify 12 volt DC power is available from the battery or from the filtered side of the power converter. Verify 12 volt DC power is present at the circuit board.
Poor ground at monitor panel or at holding tank ground probe. Wire to tank resistor harness disconnected or damaged.	Verify ground at panel and ground probe with a continuity tester. Verify wire is connected and free of damage. Replace if needed. With the tank resistor harness correctly installed and free from damage, a jumper wire containing a 47Kohm resistor placed between the holding tank ground probe and any tank level probe should cause the respective tank level lights to illuminate.
Short circuit on board	If the above test fails to illuminate the level lights, repeat the test at the monitor panel. Refer to the wiring diagram for the correct wires to jump together. If lights illuminate, replace the wiring between the panel and the tank resistor harness. If lights do not illuminate, replace the circuit board.

Some or All Holding Tank Level Lights On Continuously

Possible Cause	Corrective Action
Foreign substances on interior of holding tank causing false readings Tank sensor wire from panel to tank resistor harness shorted to ground.	See inaccurate holding tank readings above. Clean holding tanks per manufacturer's recommendation. Disconnect wire from panel and tank resistor harness. Verify wire is not shorted to ground with continuity tester. Replace wire if shorted.
Tank resistor harness shorted internally	Disconnect the tank resistor harness from the tank sensors and from the wire connected to the monitor panel. Check resistance between tank sensor wires with an Ohmmeter. Typical resistance will be 68Kohm between Full and 2/3 levels; 68Kohm between 2/3 and 1/3 levels; and 136Kohm between Full and 1/3 levels. Specific resistance will vary based on resistor harness model, but at no time should you detect a dead short or open circuit. For resistor values specific to your application, please determine the model number of the resistor harness in question and contact Ventline for assistance. If a short or open is detected, replace the tank resistor harness.
Short circuit on board	If the above steps fail to pinpoint the specific problem, replace circuit board and re-test.

LP Gas Levels Not Reading Accurately

Possible Cause	Corrective Action
Open circuit between panel and LP sensor causes tank to incorrectly read full. Short circuit between panel and LP sensor causes tank to incorrectly read empty.	Disconnect the wire running from the monitor panel to the LP sensor. Check the wire for damage and with a continuity tester to verify the wire is OK. If OK, reconnect and check operation. If circuit is open or shorted replaced the wire and re-test.
Defective LP sensor provides incorrect signal to monitor panel causing incorrect readings.	Consult the RV manufacturer for information on troubleshooting the LP sensor. Replace the LP sensor and re-test.
Short circuit in board	If the above steps fail to pinpoint the specific problem, replace the circuit board and re-test.

Range Hood Light Not Functioning

No power	Verify 12 volt DC power is present. Verify power wiring is intact and free from damage.
Defective light switch	Verify switch function with continuity tester. If test shows switch failure, replace switch.
Burned out light bulb	Replace light bulb.

Range Hood Exhaust Fan Not Functioning

No power	Verify 12 volt DC power is present. Verify power wiring is intact and free from damage.
Defective fan switch	Verify switch function with continuity tester. If test shows switch failure, replace switch.
Defective fan motor	Test fan motor with a know 12 volt DC power source. If motor will not function, replace the motor.

Ventline Technical Support

If the above information is inadequate to solve your specific troubleshooting requirement on any Ventline Two Wire monitor panel system please contact Ventline for technical support. Ventline technical support staff will require the specific model number of the monitor panel in question (marked on the rear of the monitor panel), as well as the make and model of the recreational vehicle in which the monitor is installed. Please be prepared with this information in advance. Failure to furnish this information will result in unavoidable delays and may prevent us from assisting altogether.

Conventional Monitor Panel Systems

The “conventional” monitor system is commonly used to monitor holding tank levels, battery charge levels, and LP gas levels in recreational vehicles. This technology offers the consumer a convenient method for determining status of the above from a central location. Monitor systems are commonly located in a wall mount panel or furnished as part of the galley range exhaust hood. Regardless of the location or style of monitor, the basic purpose and function of all conventional monitor systems are the same.

Components of the Conventional System

Monitor Panel – The monitor panel consists of a metal or plastic chassis to which the printed circuit board, switching, and printed overlay are attached. The panel can be wall mounted with screws or mounted to the range exhaust hood using various methods. Each monitor panel manufactured by Ventline has been designed to provide for specific functions as specified by the RV manufacturer. Holding tank levels are typically displayed in ¼ or 1/3 tank increments. The monitor panel is normally equipped with a single lighted status display and individual test switches for each status point monitored (multi-switch).

Wiring Harness - The wiring harness is an engineered assembly of wires and connectors which provides the monitor panel with 12 volt DC power as well as inputs from those items being monitored. Wiring harnesses are typically color-coded. The wiring diagram prepared for each Ventline monitor panel will reflect the color-coding specified by the RV manufacturer.

Holding Tank Sensors – The holding tank sensors are located in the sidewall of the holding tanks at various locations corresponding with the levels being monitored. Sensors may be permanent or removable. The relative location of these stainless steel sensors will vary with the configuration of the holding tank.

Fresh Water Probe – The fresh water probe is specially designed probe for use with potable water. It consists of various lengths of stainless steel wire, which are suspended through a threaded fitting from the top of the fresh water tank.

Please refer to the drawings shown in Appendix B for identification of system components, typical wiring configurations, and suggested installation methods. Ventline manufactures a wide variety of monitor panel systems to OEM specifications. The drawings shown in Appendix B are intended to show general system configuration only. Your system may contain more or less features based on specific OEM requirements. If you require technical information or repair parts, please contact your RV dealer or RV manufacturer for assistance in identification of your specific system.

Installation

To ensure proper operation, each monitor system must be installed in accordance with the appropriate wiring diagram and tank sensor location diagram. The 12-volt power source must be the vehicle battery or originate from the filtered/battery side of the AC/DC power converter. Undesirable line noise present on the unfiltered side of the AC/DC power converter will cause a number of unpredictable malfunctions.

Operation Overview – Conventional Multi Switch Systems

Fresh Water Status Switch – (commonly labeled “Fresh Tank”, “Fresh” and “Water Level”): Pressing and holding this switch will display the liquid level of the fresh water holding tank on the monitor panel display.

Holding Tank #1 Status Switch – (commonly labeled “Black Tank”, “Black”, and “HT1”): Pressing and holding this switch will display the liquid level of the sewage holding tank on the monitor panel display.

Holding Tank #2 Status Switch – (commonly labeled “Gray Tank”, “Gray” and “HT2”): Pressing and holding this switch will display the liquid level of the wastewater holding tank on the monitor panel display. The source of this wastewater is typically a sink or shower. Some recreational vehicles will be equipped with multiple wastewater holding tanks and the monitor panels will be marked accordingly.

LP Gas Status Switch – (commonly labeled “LP”): Pressing and holding this switch will display the fuel level of the LP gas tank(s) on the monitor panel display.

Battery Condition Status Switch – (commonly labeled “Battery” or “Battery Charge”) “ Pressing and holding this switch will display the charge level of the battery(s) on the monitor panel display. Charge increments are displayed as nominal voltage levels or as “good, fair, low” as specified by the RV manufacturer.

Water Pump Switch – This switch is used to operate the water pump system. Pressing this switch to the “on” position will energize the water pump and illuminate a red indicator light labeled “pump” or “pump on”. Pressing this switch to the off position will de-energize the water pump and turn off the indicator light.

Water Heater Switch – This switch is used to operate the water heater. Pressing this switch to the “on” position will begin the water heater ignition sequence. During the ignition sequence, the indicator light labeled “pilot” or “pilot out” will flash on and off. This light will turn off when ignition is complete. As additional hot water is required, the water heater will automatically re-light as evidenced by the flashing indicator light. If water heater ignition is not successful, the light will remain on, indicating a fault condition. If ignition is not successful, place the switch in the off position for 30 seconds before repeating the ignition sequence. If the fault condition continues, consult the RV manufacturer or the water heater manufacturer for assistance in troubleshooting. The water heater switch should remain in the “on” position as long as hot water is desired.

Hood Light Switch – This switch will be present on range hood mounted panels only. Pressing this switch to the “on” position will illuminate the light furnished as part of the range hood. Pressing the switch to the off position will turn the light off.

Single speed rocker switch – When pressed to the “on” position will energize the exhaust fan to high or low speed, with the center position being “off”. On some models this switch will also energize a remote mounted exterior vent, causing it to open during fan operation. Pressing the switch to the center “off” position will de-energize the fan (and close the exterior vent if so equipped).

Dual speed lever switch – This three-position switch will energize the exhaust fan to high or low speed, with the far left position being “off”. This switch will also open a remote mounted exterior vent during fan operation. Moving the switch to the left “off” position will de-energize the fan and close the exterior vent.

Caution: Never operate the range burners without energizing the range hood exhaust fan.

Operation Overview – Conventional Multi Light Systems.

The conventional multi light system provides for the same functions as the multi switch system, but does so using a single “test” switch and multiple lighted displays. When the “test” switch is pressed the status of all functions being monitored will be displayed simultaneously.

Other features such as the water pump, water heater, and range hood controls will operate as previously described in the section titled Operational Overview – Conventional Multi System Systems.

Troubleshooting – All Conventional Systems

When troubleshooting a problem with a Ventline conventional monitor system, always remember that there are three basic system components to consider:

- 1) The monitor panel assembly, which includes the circuit board, light and switching.
- 2) The wiring harness, which includes the wires and connectors which connect the monitor panel to 12 volt DC power, ground, tank sensors, LP sensors and switching.
- 3) The holding tank sensors, level sensors and fresh water probes.

In many cases, a malfunction of one of the above components will be reflected in another, which can result in misdiagnosis of the actual problem. Ventline recommends a consistent, methodical approach to troubleshooting in order to diagnose and correct the problem with the minimum investment in time and resources.

Prior to troubleshooting any monitor panel problem, verify the following:

- 1) You are in possession of the correct wiring diagram for the specific system requiring diagnostics.
- 2) The 12-volt power source is present and originates from the battery on the filtered side of the power converter.
- 3) The chassis ground is present and has a good connection through the negative side of the battery.
- 4) The monitor panel assembly has been inspected and is free from damage. Check for broken wires, loose components and connectors.
- 5) The wiring harness is connected properly and is free from damage.
- 6) The tank sensor and level sensor wires are connected properly and are free from damage.
- 7) The tank level sensors and fresh water probes are properly located and are free from damage.
- 8) All wiring is done in accordance with the wiring diagram.
- 9) All of the above components are accessible during troubleshooting.

After the above is verified, proceed with troubleshooting the system. Common problems are listed starting on the following page, followed by individual troubleshooting sections devoted to each problem.

Common Field Problems

- 1) Inaccurate holding tank level readings.
- 2) Some or all holding tank level lights not coming on.
- 3) Some or all holding tank level lights continuously on.
- 4) LP gas levels not reading properly.
- 5) Range hood light not functioning (hood mounted panels only)
- 6) Range hood fan not functioning (hood mounted panels only)

Inaccurate Holding Tank Level Readings

The accuracy of conventional holding tank monitoring systems is rarely affected by dirty tanks, unusual mineral content in the water, or improper holding tank probe location. In extreme cases these conditions and cause the monitoring system to have oversensitive (readings higher than actual level) or undersensitive (readings lower than actual level) readings.

Oversensitive Readings - Over-sensitive readings can occur as a result of scum buildup on the tank walls, abnormally high mineral content in the water, or incorrectly located holding tank probes. In these situations, the monitoring system indicates higher levels than are actually present in the holding tank. Certain cleaning products and food by-products can build up on the inside walls of the holding tanks producing a layer of scum that can cause the monitoring system to read higher than the actual level. To correct this problem, the holding tanks should be cleaned periodically (consult dealer or tank manufacturer for cleaning instructions). If the problem persists after cleaning the holding tank, the ground probe can be moved farther away from the other tank probes. The increased distance between the ground probe and the other probes will decrease the sensitivity of the monitoring system.

Undersensitive readings – Under-sensitive readings can occur if the mineral content of the water is abnormally low or if the holding tank probes are located incorrectly. In this case, the monitoring system indicates lower levels than are actually present in the holding tank. This problem can be corrected by moving the ground probe closer to the other probes. Moving the ground probe closer increases the sensitivity of the monitoring system.

Some or All Holding Tank Level Lights Not Coming On

Possible Cause	Corrective Action
No Power	Verify 12 volt DC power is available from the battery or from the filtered side of the power converter. Verify 12 volt DC power is present at the circuit board.
Poor ground at monitor panel or at holding tank ground probe. Wire to tank resistor harness disconnected or damaged.	Verify ground at panel with a continuity tester.
Short circuit on board	Verify wire is connected and free of damage. Replace if needed. With the tank resistor harness correctly installed and free from damage, a jumper wire placed between the holding tank sensor probe and any tank level probe should cause the respective tank level lights to illuminate. If the above test fails to illuminate the level lights, repeat the test at the monitor panel. Refer to the wiring diagram for the correct wires to jump together. If lights illuminate, replace the wiring between the panel and the tank resistor harness. If lights do not illuminate, replace the circuit board.

Some or All Holding Tank Level Lights On Continuously

Possible Cause	Corrective Action
Foreign substances on interior of holding tank causing false readings Tank sensor wire from panel to tank sensor probe shorted to wire for tank level probe.	See inaccurate holding tank readings above. Clean holding tanks per manufacturer's recommendation. Disconnect wire from panel and tank sensor probes. Verify wire is not shorted to ground with continuity tester. Replace wire if shorted.
Short circuit on board	If the above steps fail to pinpoint the specific problem, replace circuit board and re-test.

LP Gas Levels Not Reading Accurately

Possible Cause	Corrective Action
Open circuit between panel and LP sensor causes tank to incorrectly read full. Short circuit between panel and LP sensor causes tank to incorrectly read empty.	Disconnect the wire running from the monitor panel to the LP sensor. Check the wire for damage and with a continuity tester to verify the wire is OK. If OK, reconnect and check operation. If circuit is open or shorted replaced the wire and re-test.
Defective LP sensor provides incorrect signal to monitor panel causing incorrect readings.	Consult the RV manufacturer for information on troubleshooting the LP sensor. Replace the LP sensor and re-test.
Short circuit in board	If the above steps fail to pinpoint the specific problem, replace the circuit board and re-test.

Range Hood Light Not Functioning

No power	Verify 12 volt DC power is present. Verify power wiring is intact and free from damage.
Defective light switch	Verify switch function with continuity tester. If test shows switch failure, replace switch.
Burned out light bulb	Replace light bulb.

Range Hood Exhaust Fan Not Functioning

No power	Verify 12 volt DC power is present. Verify power wiring is intact and free from damage.
Defective fan switch	Verify switch function with continuity tester. If test shows switch failure, replace switch.
Defective fan motor	Test fan motor with a know 12 volt DC power source. If motor will not function, replace the motor.

If the above information is inadequate to solve your specific troubleshooting requirement on any Ventline conventional monitor panel system, please contact Ventline for technical support. Ventline technical support staff will require the specific model number of the monitor panel in question (marked on the rear of the monitor panel), as well as the make and model of the recreational vehicle in which the monitor is installed. Please be prepared with this information in advance. Failure to furnish this information will result in unavoidable delays and may prevent us from assisting altogether.

Thank you

Ventline, division of Philips Products
 902 South Division
 PO Box 629
 Bristol, IN 46507

574-848-4491
 574-848-4825

Appendix A – 2 Wire Systems – Table of Contents

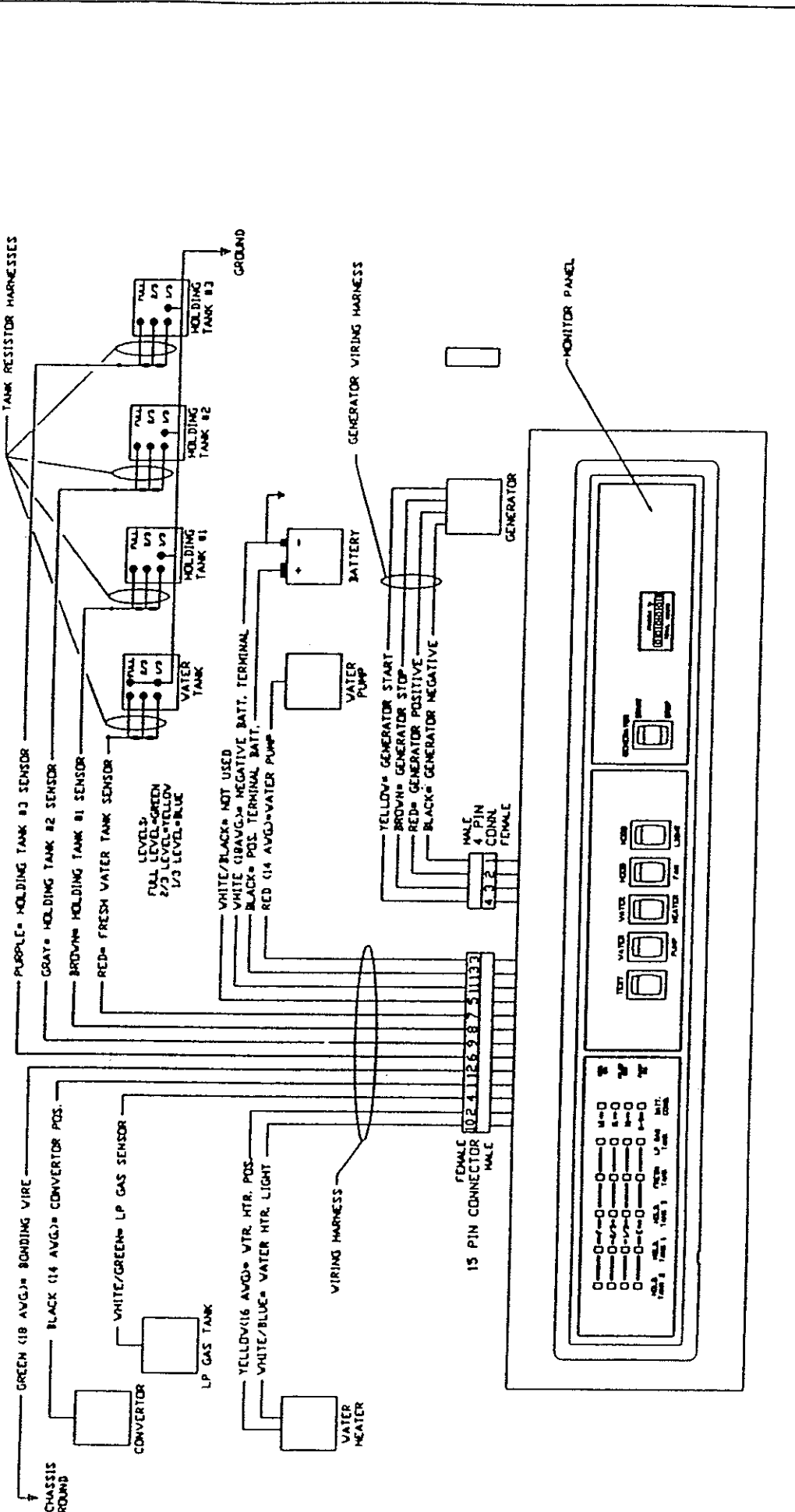
Page 1 – Typical wiring and component identification for a hood mounted, multi-light, 2 wire monitor panel.

Page 2 – Typical wiring and component identification for a wall-mounted multi-switch, 2-wire monitor panel.

Page 3 – Adjustaboard™ adjustment instructions.

Page 4 - Holding tank probe locations for 2 wire monitor systems.

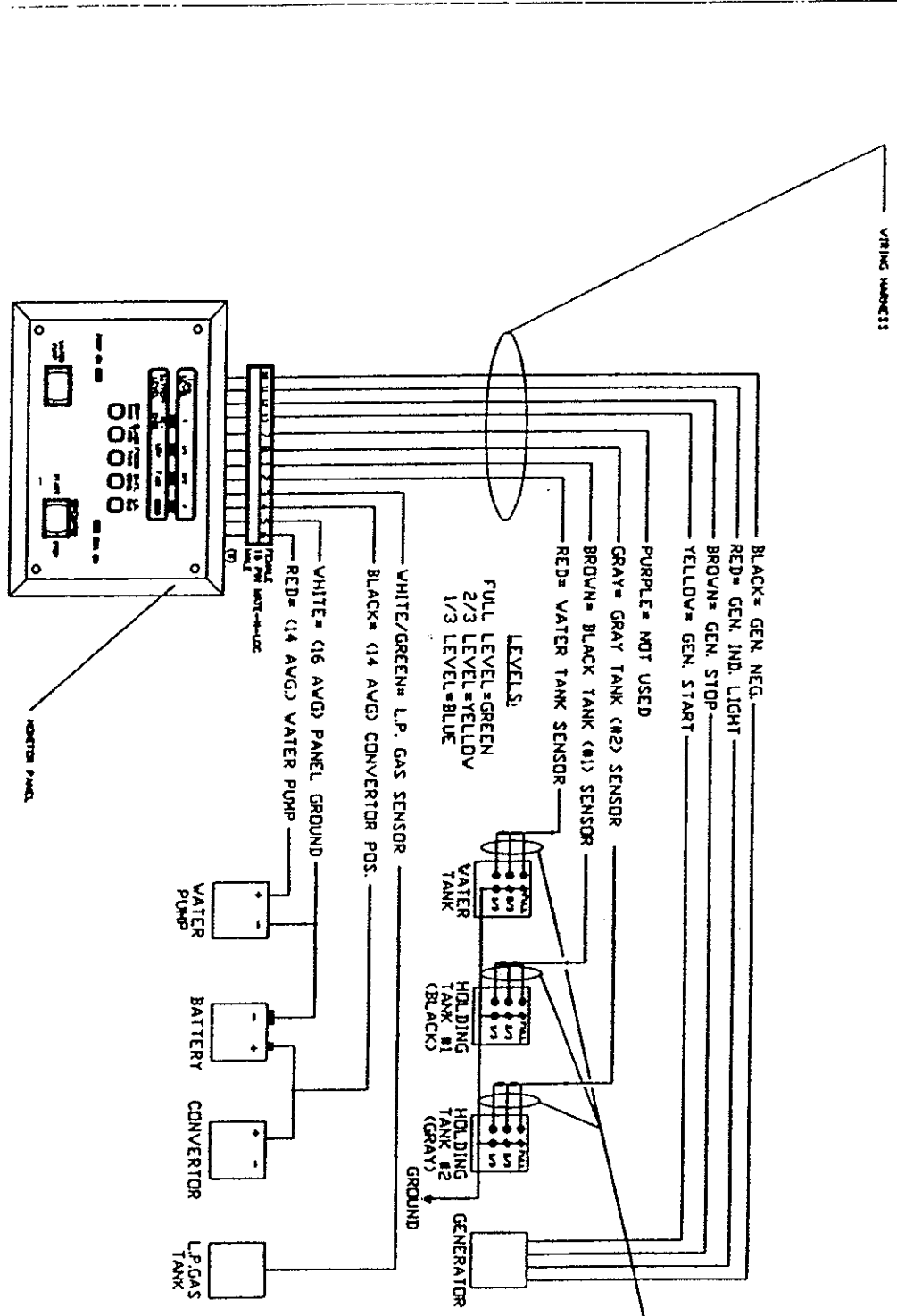
REV	DATE	BY	CHKD



REV	DATE	BY	CHKD

TYPICAL MONITOR WIRING
APP. A - PAGE 1

REV	DATE	BY
1	1/28/79	...



REV	DATE	BY
1	1/28/79	...

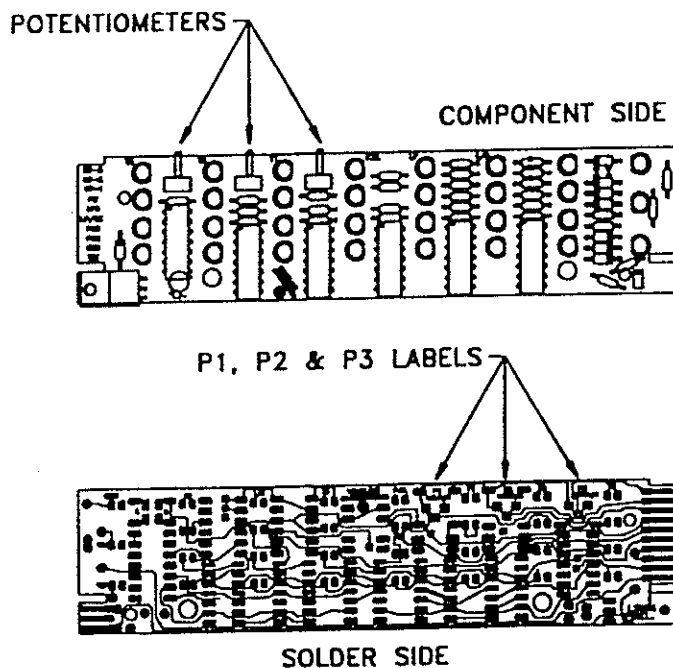


ADJUSTMENT INSTRUCTIONS FOR VENTLINE ADJUSTABLEBOARDS

Ventline's latest printed circuit boards (PCB's) are equipped with potentiometers (pots) that allow the holding tank sensitivity to be adjusted. This adjustment is sometimes necessary to compensate for the difference in conductivity between liquids in the holding tanks. The intent of this feature is to compensate for minor fluctuations in the mineral content of the water, not to be used in place of regular maintenance of the holding tanks. The pots should not be adjusted to compensate for dirty holding tanks. A buildup of grease, soap by-products, etc. will cause a path of least resistance in the holding tank and cause the system to be oversensitive. The holding tanks should be cleaned regularly as recommended by the tank manufacturer.

The PCB's have one pot installed for each holding tank, they are located towards the top of the PCB. Each pot is identified on the back of the PCB with P1, P2 or P3 (i.e. P1 = corresponds to the pot for holding tank 1). The monitor panel pots are initially set with the wiper blade fully clockwise. If a holding tank reading is oversensitive (the LED's are reading higher than the actual tank water level), the pot should be adjusted counterclockwise until the LED's read the correct level. Care should be taken not to force the pot past it's wiper blade limits. It is not necessary to remove the PCB from the monitor panel chassis to make these adjustments.

If you have any further questions regarding this subject, please contact Ventline Engineering at (219) 848-4491.



PANEL TANK WIRES - WHITE/BROWN

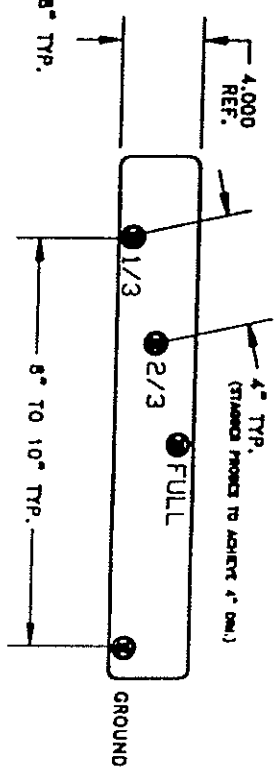
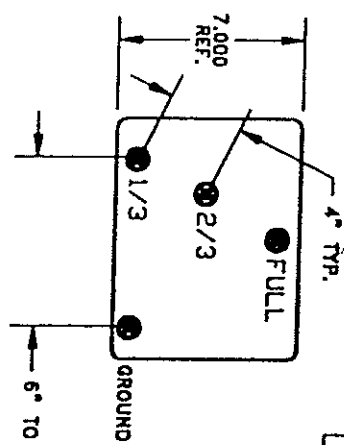
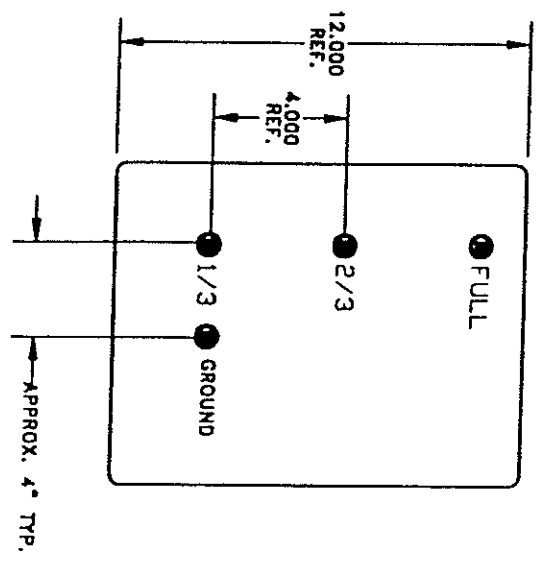


PROBES

LTR.	DESCRIPTION	DATE	BY
REL.	RELEASE FOR SERVICE INFO.	6-11-93	T.B.
A	CORRECTED SPELLING	11-7-94	RJR

REF.

T.R.H. = L7452 (3 EA.),
 FULL LEVEL = GREEN
 2/3 LEVEL = YELLOW
 1/3 LEVEL = BLUE



NOTE:
 THIS DRAWING REPRESENTS HOW HOLDING TANKS (BLACK & GREY) SHOULD BE CONFIGURED WITH WELL NUTS OR SPUN-IN TYPE TANK SENSORS. NOTE THAT SENSOR SPACING SHOULD INCREASE AS TANK DEPTH DECREASES. THIS IS REQUIRED TO INSURE THAT OVERSENSITIVE READINGS DO NOT OCCUR ON MONITOR PANEL. THERE IS ONLY ONE GROUND PROBE REQUIRED PER TANK WITH THE EXCEPTION OF THE FRESH WATER TANK. FRESH TANKS WITH A DEPTH OF UP TO, OR MORE THAN TWELVE INCHES MAY REQUIRE AN EXTRA GROUND PROBE NEAR THE FULL LEVEL TO PREVENT THE FULL LEVEL INDICATOR LIGHT ON MONITOR FROM FADING OUT, OR IF FULL LIGHT WON'T COME ON AT ALL. GROUND PROBES SHOULD NOT BE INSTALLED AT THE VERY BOTTOM OF TANK. THEY SHOULD ALWAYS BE AT LEAST HALF AN INCH FROM BOTTOM. ONLY STAINLESS STEEL PROBES SHOULD BE USED. STAINLESS STEEL PLATED SCREWS OR SPUN-IN SENSORS DON'T LAST MORE THAN A YEAR BEFORE CORROSION STARTS. ALWAYS SPACE LEVEL PROBES APART ABOUT FOUR INCHES WHEN POSSIBLE. WHEN THIS FORMAT IS FOLLOWED, THERE WILL BE A CONSISTANT READING AT THE MONITOR PANEL.

UNITS OF MEASURE: INCHES UNLESS SPECIFIED
 ENGLISH TOLERANCE UNLESS SPECIFIED
 0 PL. ±.040
 1 PL. ±.020
 2 PL. ±.010
 3 PL. ±.005
 FRACTIONS 1/164

PART NO.	REQ'D	MATERIAL	DESCRIPTION	QTY

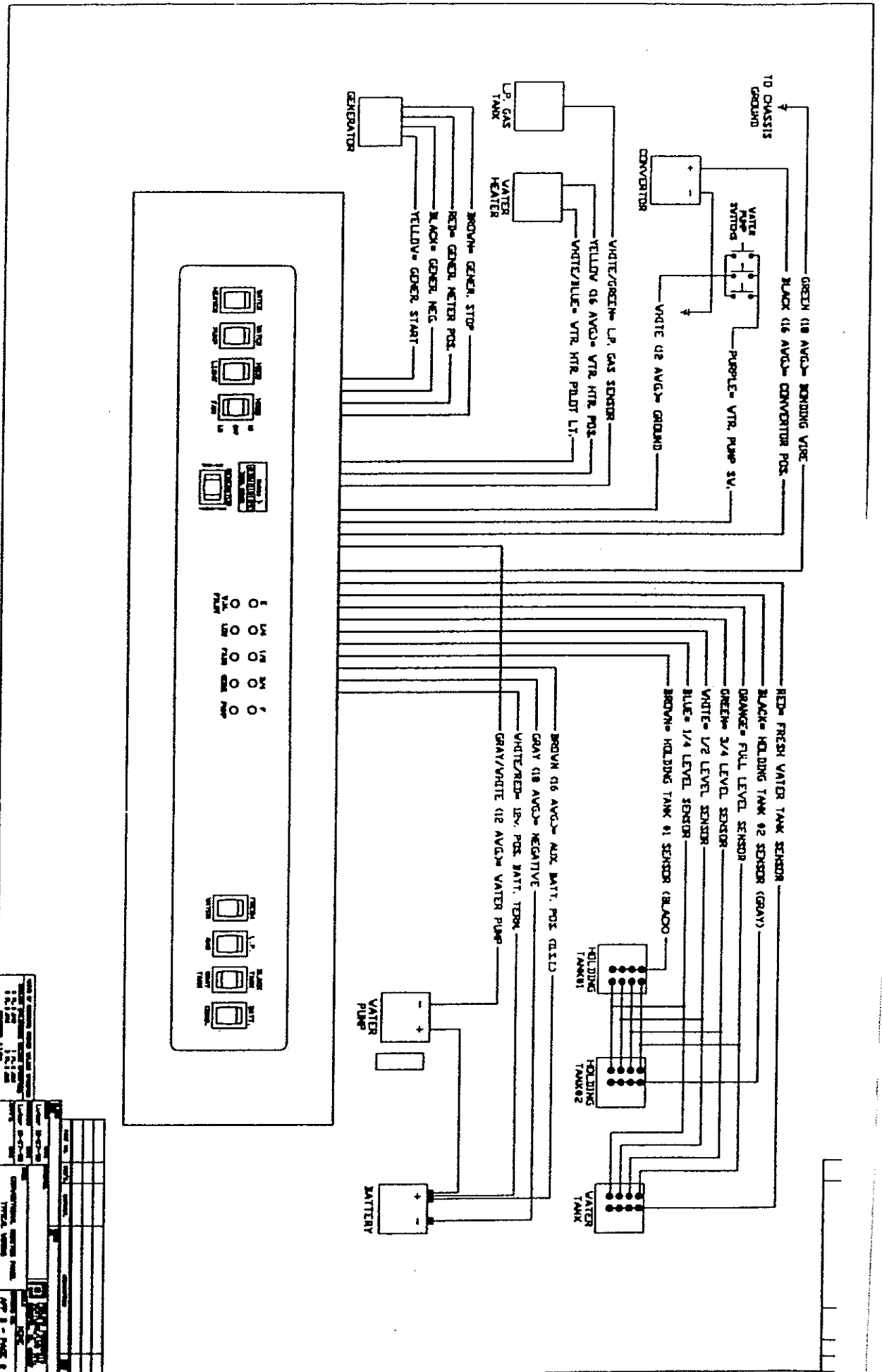
DRAWN: T. BOYLEN 6-10-93
 CHECKED: N/A
 DATE: N/A
 APP'VD: TANK CONFIGURATION FOR PROBES
 DATE: N/A
 DVG. NO. (PROBES)
 SCALE: NONE
 PHILLIPS IND. INC.
 VENTILATION DIVISION
 BRISTOL INDIANA 46507

Appendix B – Conventional Systems – Table of Contents

Page 1 – Typical wiring and component identification for a hood mounted, multi-light, conventional monitor panel.

Page 2 – Typical wiring and component identification for a wall mounted, multi-switch, conventional monitor panel.

Page 3 – Holding tank probe locations for conventional monitor panel systems.



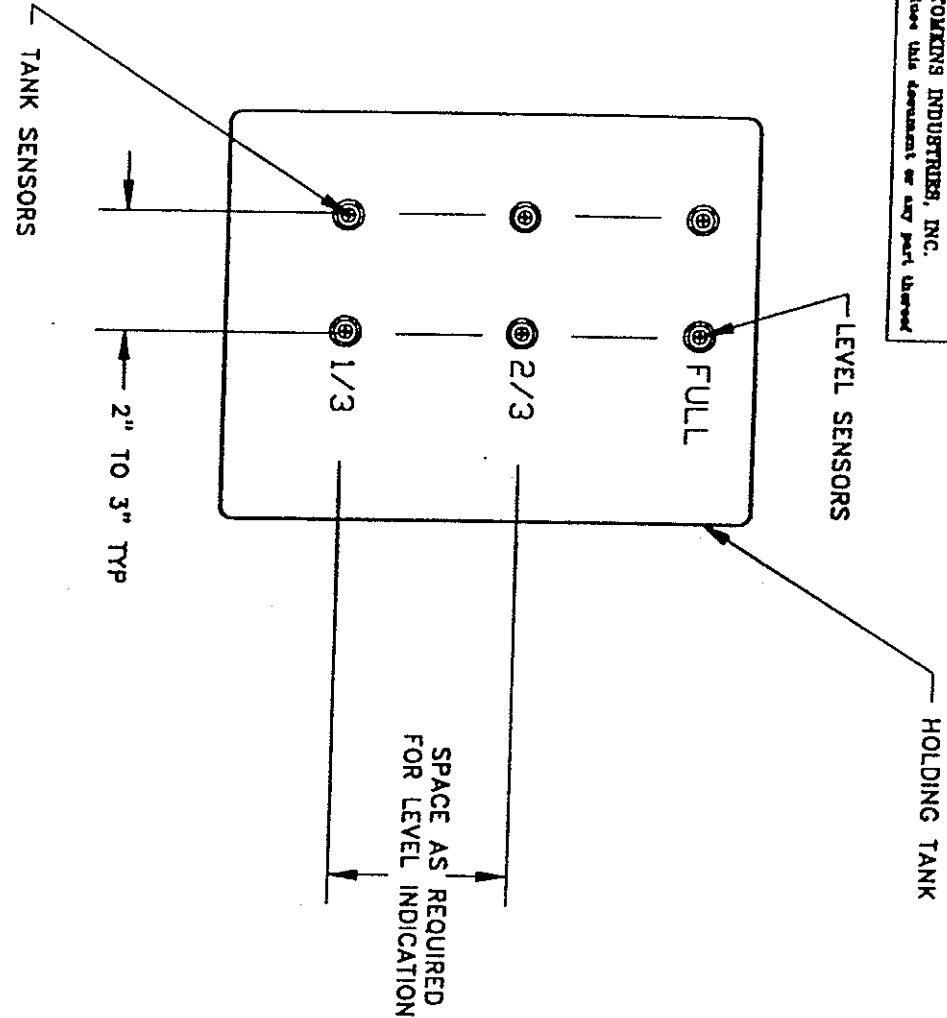
DATE	BY	REVISION
10/1/80	J. L. H.	1
10/1/80	J. L. H.	2
10/1/80	J. L. H.	3
10/1/80	J. L. H.	4
10/1/80	J. L. H.	5
10/1/80	J. L. H.	6
10/1/80	J. L. H.	7
10/1/80	J. L. H.	8
10/1/80	J. L. H.	9
10/1/80	J. L. H.	10
10/1/80	J. L. H.	11
10/1/80	J. L. H.	12
10/1/80	J. L. H.	13
10/1/80	J. L. H.	14
10/1/80	J. L. H.	15
10/1/80	J. L. H.	16
10/1/80	J. L. H.	17
10/1/80	J. L. H.	18
10/1/80	J. L. H.	19
10/1/80	J. L. H.	20
10/1/80	J. L. H.	21
10/1/80	J. L. H.	22
10/1/80	J. L. H.	23
10/1/80	J. L. H.	24
10/1/80	J. L. H.	25
10/1/80	J. L. H.	26
10/1/80	J. L. H.	27
10/1/80	J. L. H.	28
10/1/80	J. L. H.	29
10/1/80	J. L. H.	30
10/1/80	J. L. H.	31
10/1/80	J. L. H.	32
10/1/80	J. L. H.	33
10/1/80	J. L. H.	34
10/1/80	J. L. H.	35
10/1/80	J. L. H.	36
10/1/80	J. L. H.	37
10/1/80	J. L. H.	38
10/1/80	J. L. H.	39
10/1/80	J. L. H.	40
10/1/80	J. L. H.	41
10/1/80	J. L. H.	42
10/1/80	J. L. H.	43
10/1/80	J. L. H.	44
10/1/80	J. L. H.	45
10/1/80	J. L. H.	46
10/1/80	J. L. H.	47
10/1/80	J. L. H.	48
10/1/80	J. L. H.	49
10/1/80	J. L. H.	50

CONFIDENTIAL

THIS DOCUMENT, INCLUDING ALL INFORMATION CONTAINED HEREIN, IS THE EXCLUSIVE AND CONFIDENTIAL PROPERTY OF VENTURINE DIVISION OF TOMKINS INDUSTRIES INC. THE DOCUMENT AND INFORMATION ARE NOT TO BE COPIED, REPRODUCED OR DELIVERED TO OTHERS, IN WHOLE OR IN PART, WITHOUT THE EXPRESS WRITTEN PERMISSION OF VENTURINE. THE DOCUMENT IS TO BE RETURNED PROMPTLY TO VENTURINE AFTER HAVING SERVED THE PURPOSE FOR WHICH DELIVERED.

©1995 VENTURINE DIVISION, TOMKINS INDUSTRIES, INC.
 All Rights Reserved. Including the right to reproduce this document or any part thereof.

LTR.	DESCRIPTION	DATE	CHG. BY	CHK. BY
REL	RELEASED FOR TROUBLESHOOTING GUIDE	1/8/96	RJL	



PART NO.	REQ'D	MATERIAL	DESCRIPTION	DWG SIZE	APP'VD	DATE	NAME	CONVENTIONAL MONITOR SYSTEM	DWG. NO.	PAGE 3
								TANK SENSOR LOCATIONS	APP B	
BLANK SIZE DRAWN					DATE		MATERIAL		USED ON	
RUL					DATE		NAME		PHILIPS IND. INC.	
CHECKED					DATE		CONVENTIONAL MONITOR SYSTEM		VENTURINE DIVISION	
							TANK SENSOR LOCATIONS		BRISTOL, INDIANA 46507	
							SCALE: NONE			