



3311145.000

**KIT, SECONDARY BURNER
HOUSING ASSEMBLY
FOR
Americana/AMES/AES
2-Way Refrigerators**

USA
SERVICE OFFICE
Dometic Corporation
2320 Industrial Parkway
Elkhart, IN 46516
574-294-2511

CANADA
Dometic Corporation
46 Zatonski, Unit 3
Brantford, ON N3T 5L8
CANADA
519-720-9578

For Service Center
Assistance Call:
800-544-4881

MODEL

**RM2652, RM2662, RM3662
RM2852, RM2862, RM3862
& NDR1062**

Serial Number's 713xxxxx thru 319xxxxx

Patent Pending

Dometic Corporation recall campaign number 06E-076

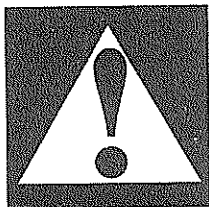
SERVICE INSTRUCTION

**This Kit Is Only Intended For The Dometic Brand Of Product And Is Not
To Be Used On Any Other Brand And Model Of Product**

SAFETY INSTRUCTIONS

This manual has safety information and instructions to help users eliminate or reduce the risk of accidents and injuries.

RECOGNIZE SAFETY INFORMATION



This is the safety-alert symbol. When you see this symbol in this manual, be alert to the potential for personal injury.

Follow recommended precautions and safe operating instructions.

UNDERSTAND SIGNAL WORDS

A signal word, **WARNING** OR **CAUTION** is used with the safety-alert symbol. They give the level of risk for potential injury.

WARNING Indicates a potentially hazardous situation which, if not avoided, could result in death or serious injury.

CAUTION Indicates a potentially hazardous situation which, if not avoided, may result in minor or moderate injury.

CAUTION When used without the safety alert symbol indicates, a potentially hazardous situation which, if not avoided, may result in property damage.

Read and follow all safety information and instructions.

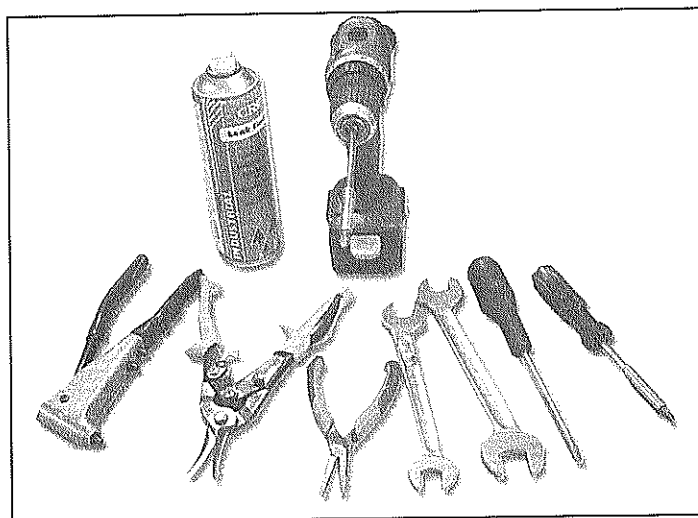
GENERAL INSTRUCTIONS

WARNING

These instructions must be read and understood before installation of this kit. This kit must be installed by a Dometic Service Center or a qualified service technician. Modification of this product can be extremely hazardous and could result in personal injury or property damage.

TOOLS & SUPPLIES REQUIRED

Leak Detection Solution	Small Slot Screwdriver
#2 Phillips Screwdriver	Pop Rivet Gun
Long Needle Nose Pliers	Cordless Drill
#2 Phillips Long Bit	Open End Wrenches
Sheet Metal Shears	Wire Nut for 12-16 AWG
6" Plastic Tie wrap	



Note: Wear gloves to avoid injury when installing this kit.



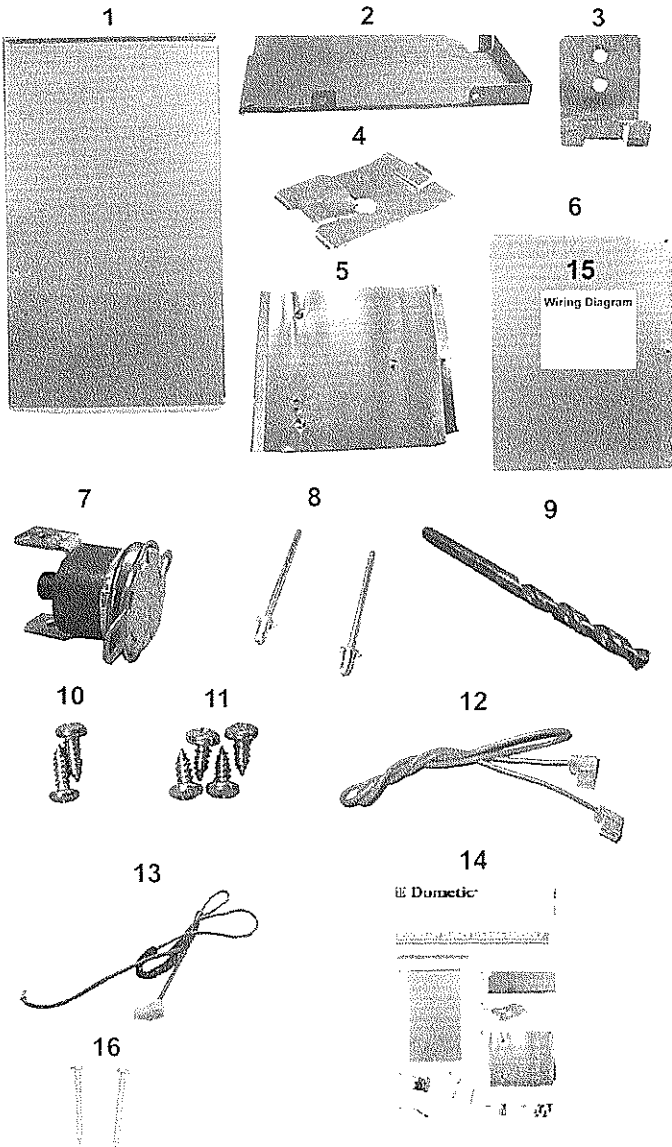
Before starting installation of this kit, you must turn off the LP gas supply at the tank, remove the 120 VAC refrigerator power cord from the wall receptacle, and disconnect the 12 VDC supply line at the source.

WARNING

Personal injury hazard. Turn off LP gas supply at tank. Unplug 120 VAC refrigerator power cord from wall receptacle. Disconnect 12 VDC supply line at the source. Failure to heed this warning may cause severe personal injury or property damage.

CONTENTS OF KIT

Before beginning Installation verify all items are enclosed.



INSTALLATION INSTRUCTIONS

This step-by-step instruction describes how to install the Secondary Burner Housing Assembly consisting of a protection plate, bottom plate, boiler cover, rear cover, holder for thermal fuse, and cover for the heating element. Furthermore, it explains how to install the thermo disc and how to connect the thermal fuse and wire on units operating on LP gas and 120 VAC energy sources. These units are called 2-Way refrigerators.

Depending on how the refrigerator's ventilation grille is mounted, this Service Kit may be installed with the burner and burner cover in place. However, sometimes this is not possible and may require the removal of the burner and its cover in order to insert the bottom plate. These instructions explain how to go about removing and reinstalling the burner as well as necessary related tasks.

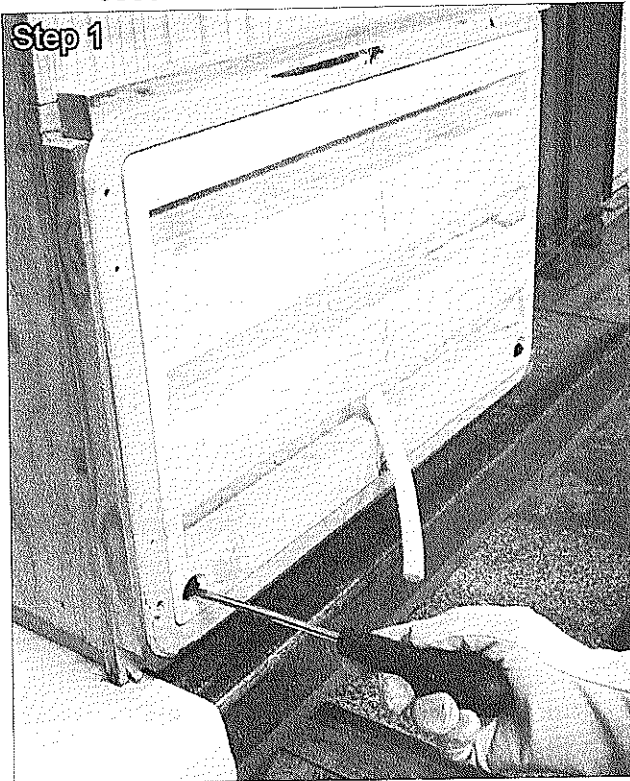
Note: If you find that this information is not applicable to you, please skip those steps including steps describing the loosening/tightening of the LP gas connection and performing leak detection.

During disassembly, **do not discard any of the removed screws. These will be used when reinstalling the different parts.**

1. Protection Plate, Back	1 PCS
2. Bottom Plate	1 PCS
3. Holder (Thermal Fuse)	1 PCS
4. Cover (Heating element)	1 PCS
5. Boiler Cover	1 PCS
6. Rear Cover	1 PCS
7. Thermo Disc	1 PCS
8. Pop Rivet	2 PCS
9. Drill Bit	1 PCS
10. Screw, #8 x 18 x 1/2"	2 PCS
11. Screw, #8 x 18 x 3/8"	4 PCS
12. Wire, Complete	1 PCS
13. Thermal Fuse (Wire)	1 PCS
14. Service Instructions	1 PCS
15. Wiring Diagram 3311211.000	1 PCS
Wiring Diagram 3311221.000	1 PCS
16. Screw, #8 x 1-3/8"	2 PCS
17. Warranty Card (not shown)	1 PCS

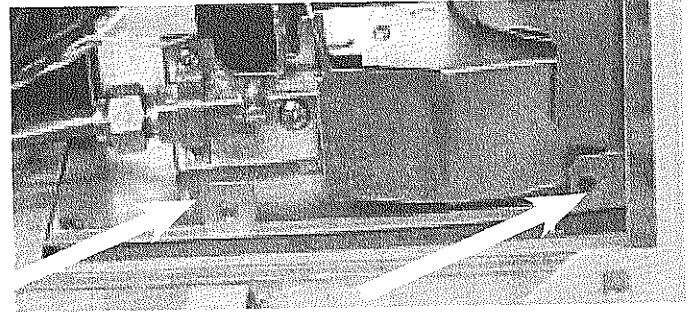
PROCEED TO PAGE 4

Step 1. Remove refrigerator lower side vent access door.



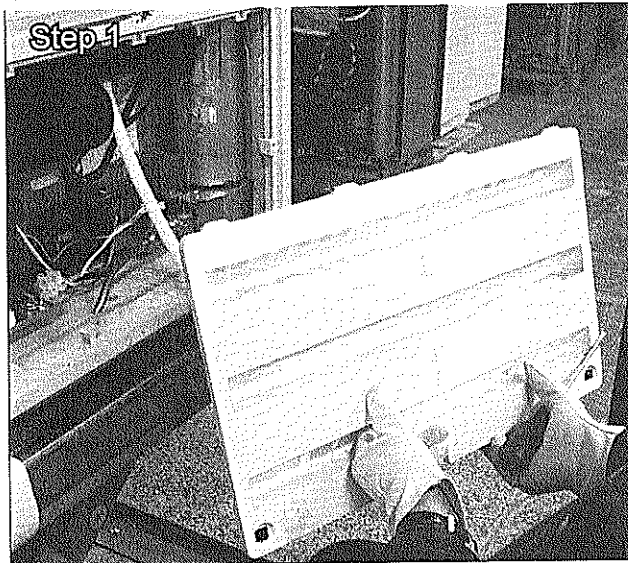
Important: Before starting the installation, determine if the bottom plate, Item (2), can be inserted without removing the burner cover and burner. The bottom plate has two score lines on it. You may need to shear the bottom plate off at these locations to get it to fit on units that already have a sheet metal barrier under the burner.

Note: Make sure the tabs identified with arrows in the photo below are facing up.



If it can, proceed to step 7. If bottom plate can not be inserted without removing the burner, go to step 2.

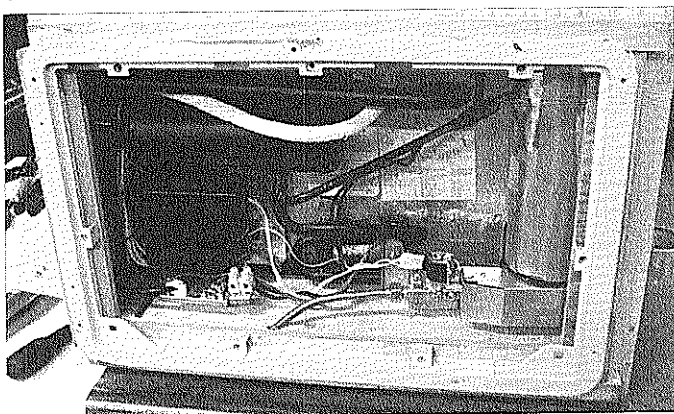
Step 2. Turn "OFF" LP gas supply at tank. Disconnect the LP gas line at the refrigerator. Use back up wrenches to secure the gas valve during removal of gas line.



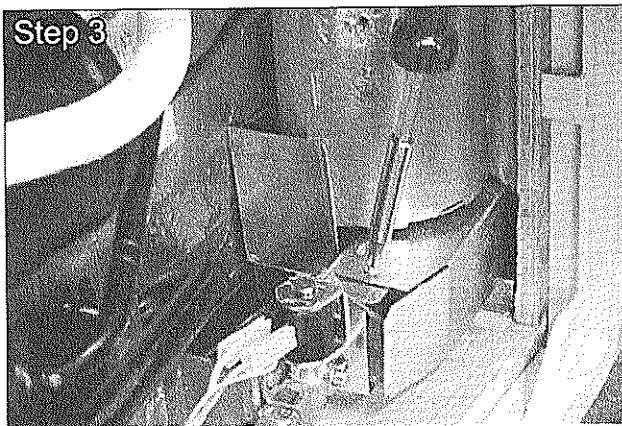
Overview of rear equipment before starting the service kit installation.

⚠ WARNING

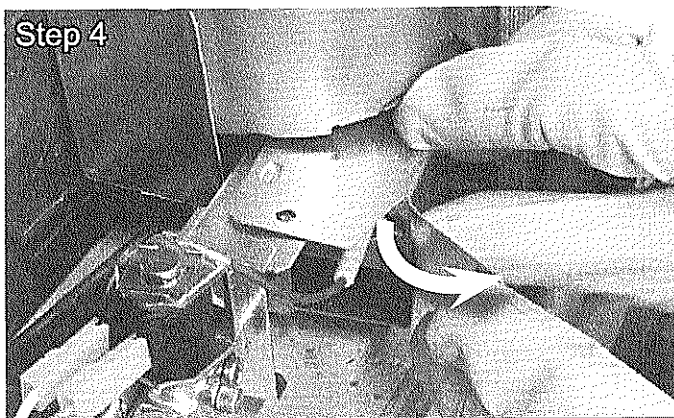
Explosion hazard. LP gas ignition could occur. Shut off the LP gas supply at the tank before disconnecting the LP gas line. Failure to heed this warning may cause severe personal injury or property damage.



Step 3. Remove the burner cover screw. **Save for reinstallation.**



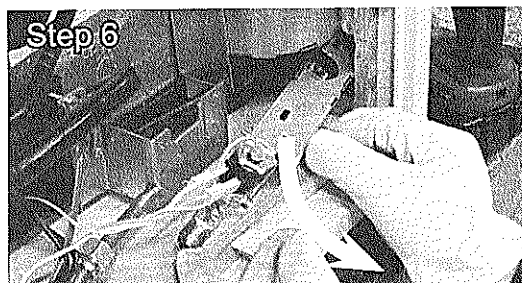
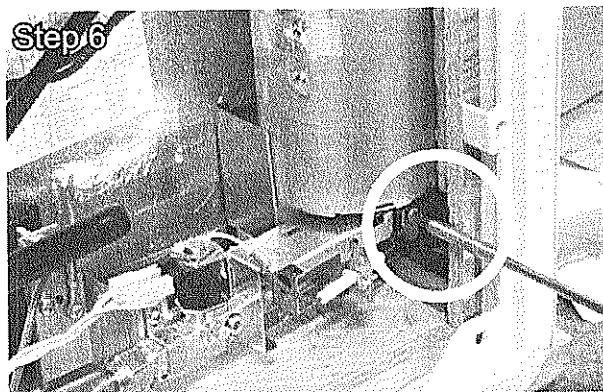
Step 4. Fold back the tab of the cover. This will allow the burner cover to shift left during removal.



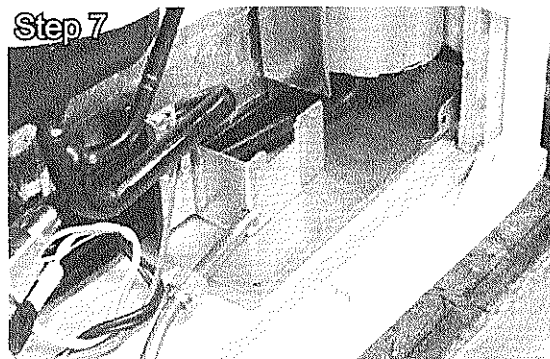
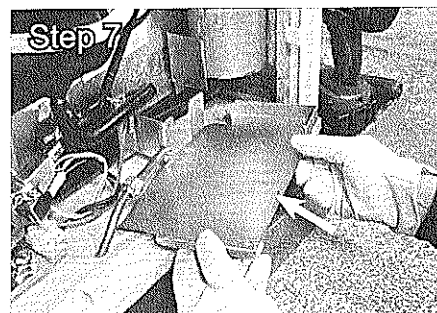
Step 5. Slide burner cover to the left and remove. It may be necessary to pry the cover out using a slotted screw driver.



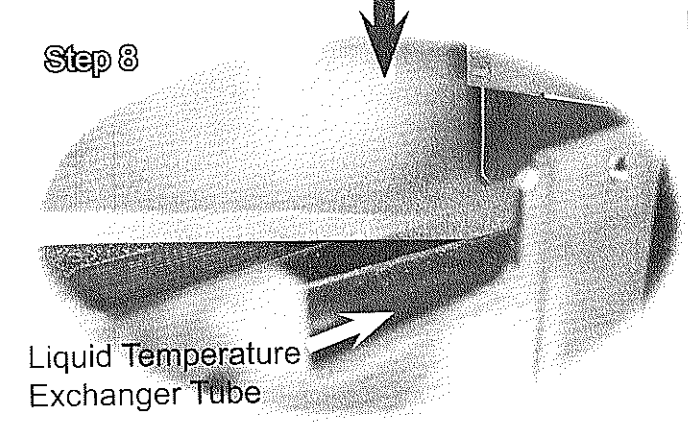
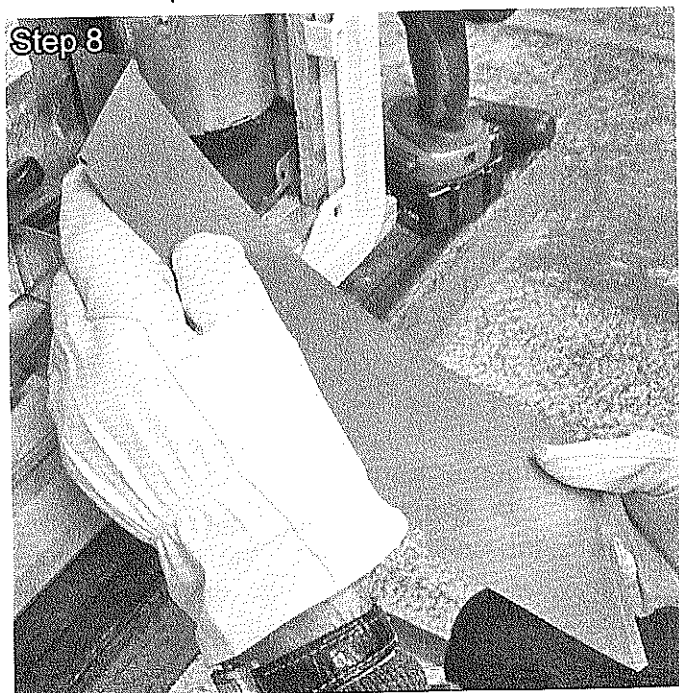
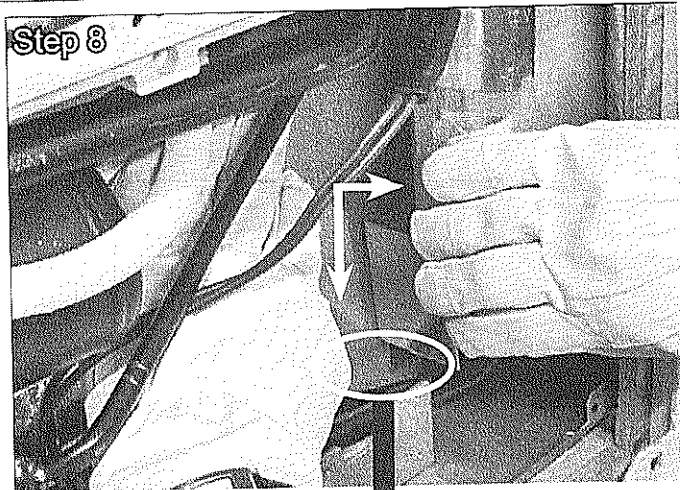
Step 6. Remove the burner by removing the five (5) fastening screws. **Save for reinstallation.**



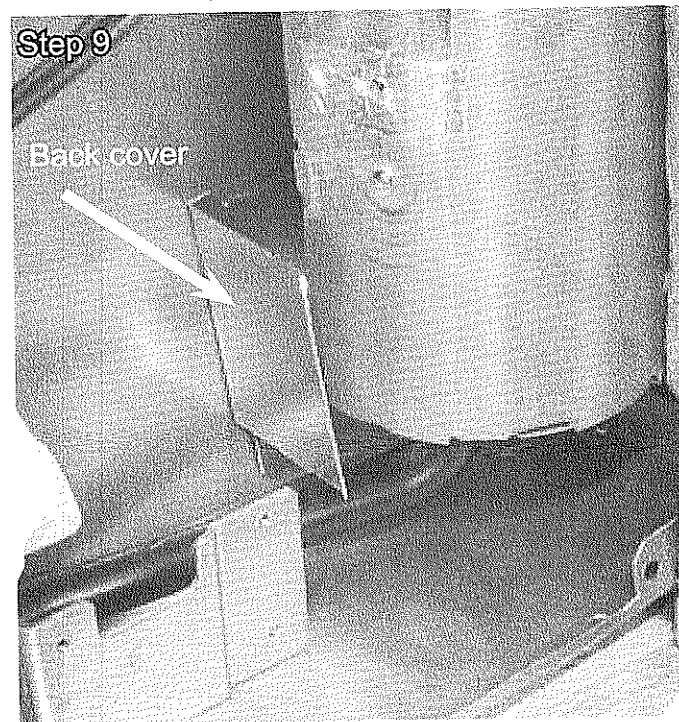
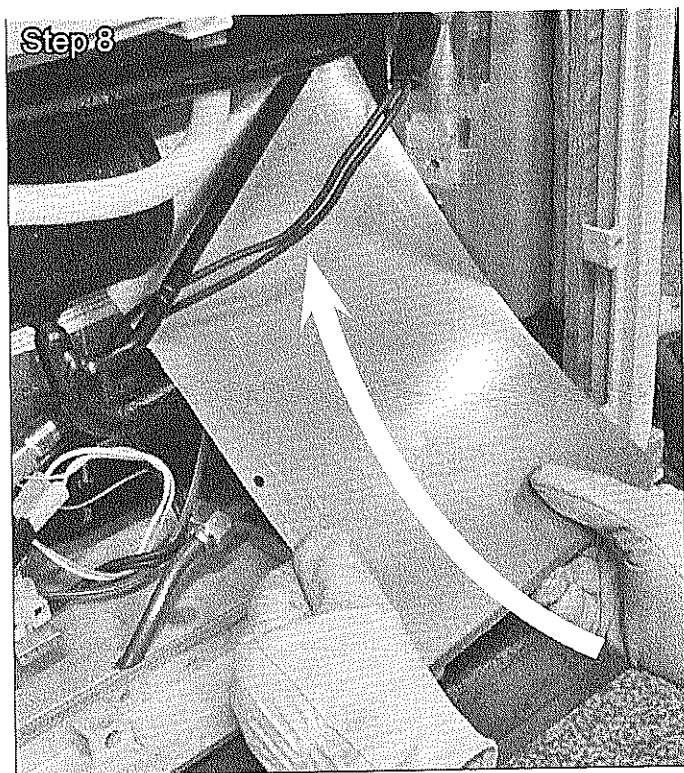
Step 7. Slide bottom plate, Item (2), into position. Edge with the two (2) mounting tabs will go toward you. Tabs should be up. See Step 1 photo. One end of the bottom plate should rest on the top of the refrigerator leg. The bottom plate has two score lines on it. You may need to shear the bottom plate off at these locations to get it to fit on units that already have a sheet metal barrier under the burner.

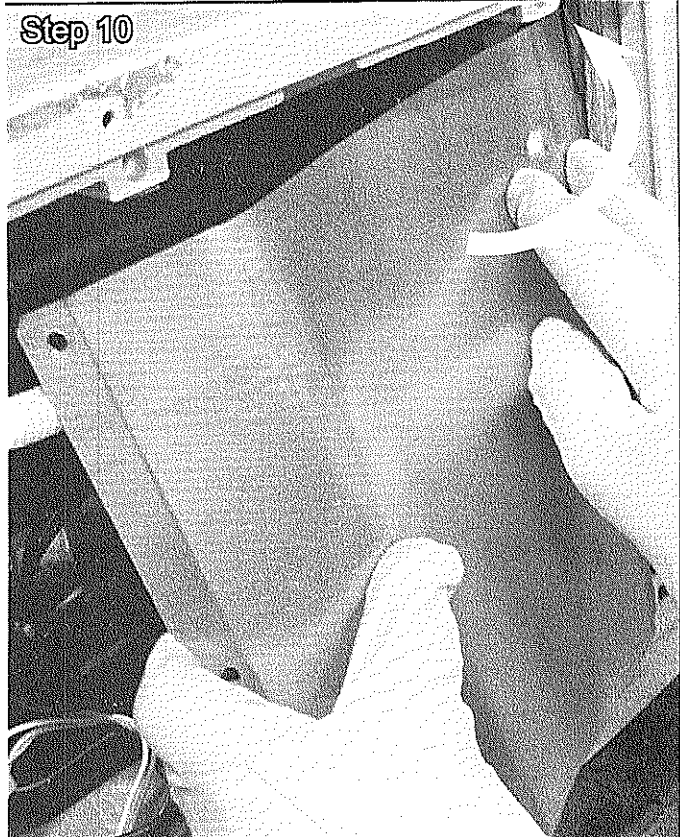
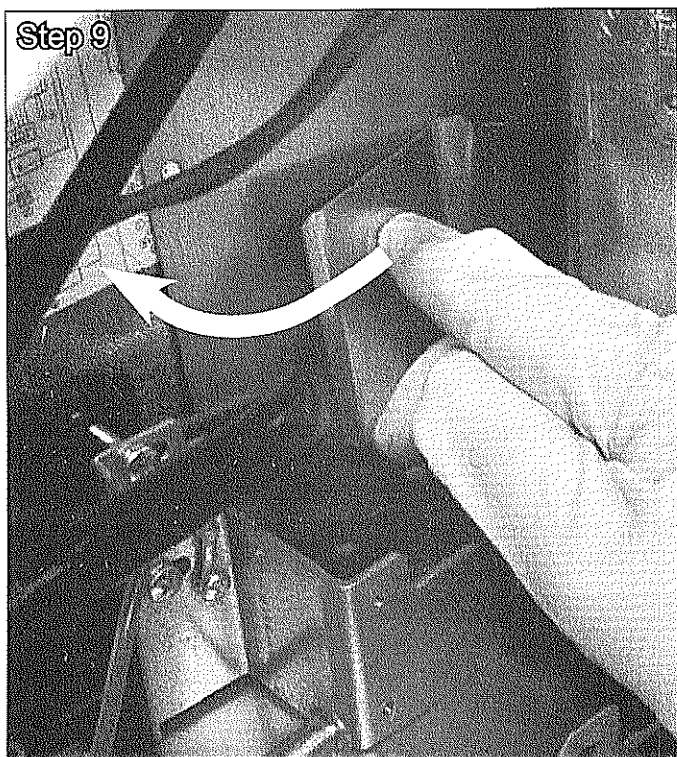


Step 8. Place the protection plate, Item (4), into position behind the flue jacket. The protection plate will fit flat against the backside of the refrigerator cabinet. It goes all the way to the bottom and side of the refrigerator. Slide the edge in between the frame and cabinet. Make sure to place it behind the liquid temperature exchanger.



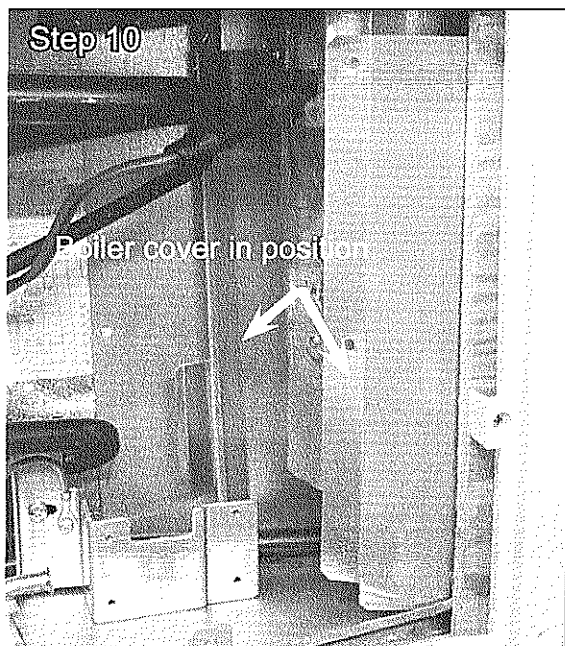
Step 9. Fold the existing back cover toward the protection plate.



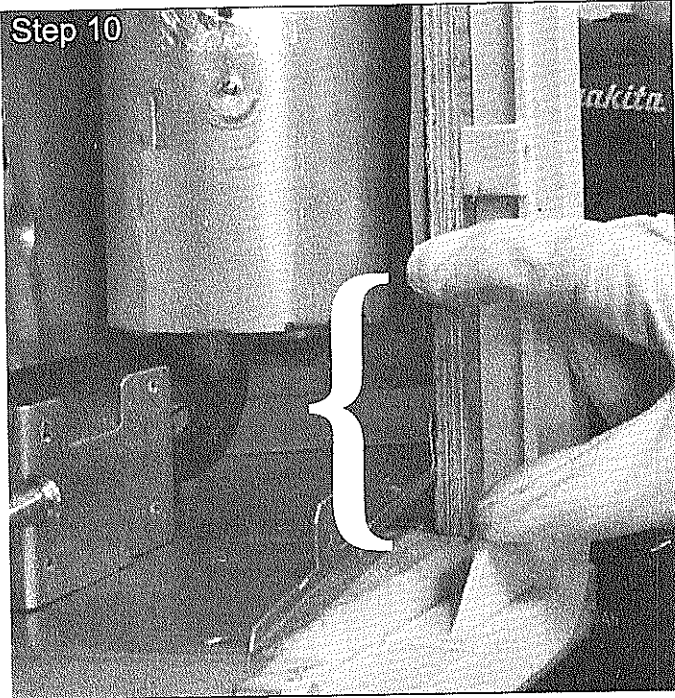


Step 10. Install the boiler cover, Item (5). The boiler cover is shipped flat with two angled edges. It will need to be formed to fit around the cooling unit flue jacket. With the angles facing toward you, grasp the side with the pre-drilled holes in your right hand and the opposite side with your left hand and bend the boiler cover toward you and form a circle approximately 6 inches in size. Note that additional adjustments to the exact form of the boiler cover may be necessary.

This will allow you to slide the cover around the cooling unit flue jacket. If required, pull the leading edge of cover from behind the cooling unit flue jacket using a pair of long needle nose pliers or by inserting a 6" plastic tie wrap into the clearance hole on the fold and flattened edge. The fold and flattened edge of the boiler cover should extend as shown in the photo below.

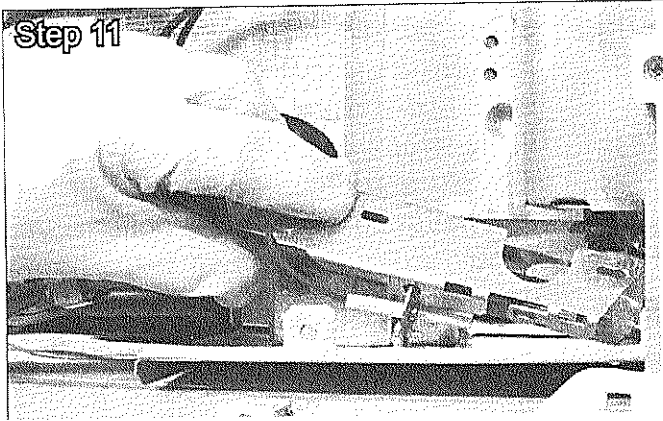


Leave sufficient spacing to enable the reinstallation of the burner.

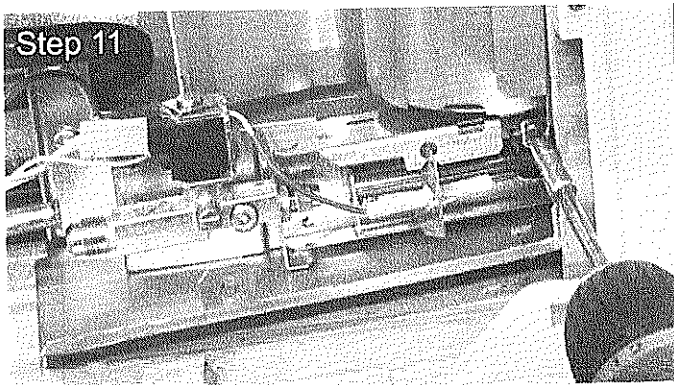


Step 10

Step 11. Reinstall burner. Fasten only the right most screw first using one of the five (5) screws saved in step 6.



Step 11



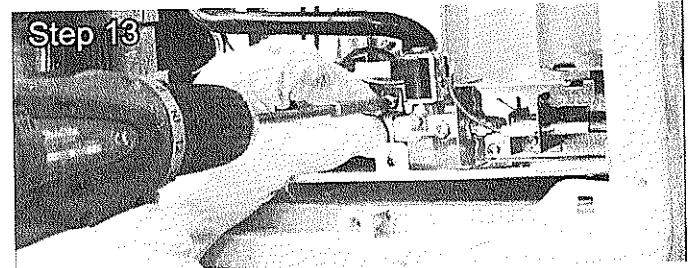
Step 11

Step 12. Reconnect the LP gas line. Be sure to use a back up wrench to properly secure supply line to gas valve.



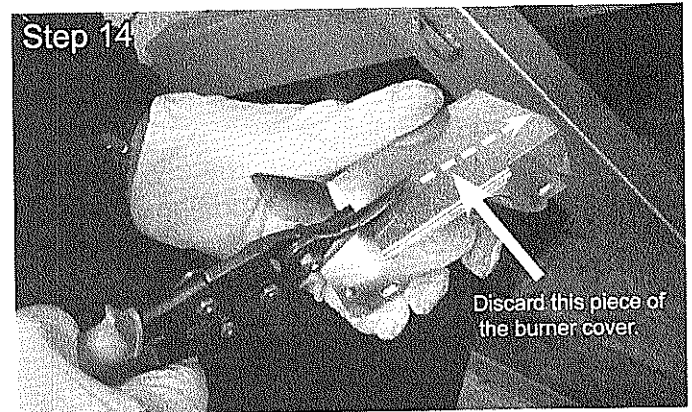
Step 12

Step 13. Secure the burner with the remaining four (4) screws from step 6.



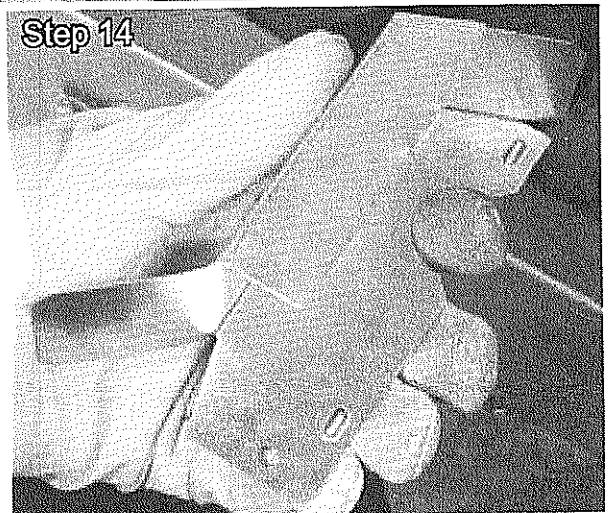
Step 13

Step 14. If necessary, trim the bottom of the burner cover using a pair of metal shears as shown.



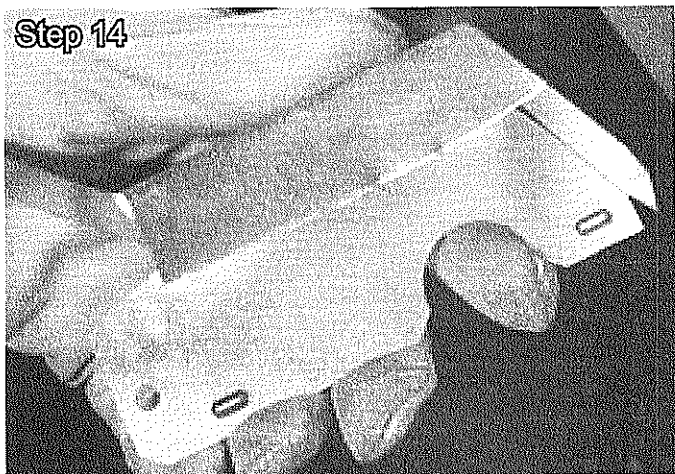
Step 14

Discard this piece of the burner cover.



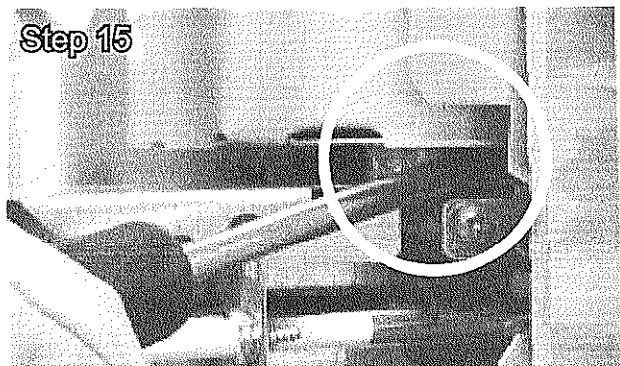
Step 14

Step 14



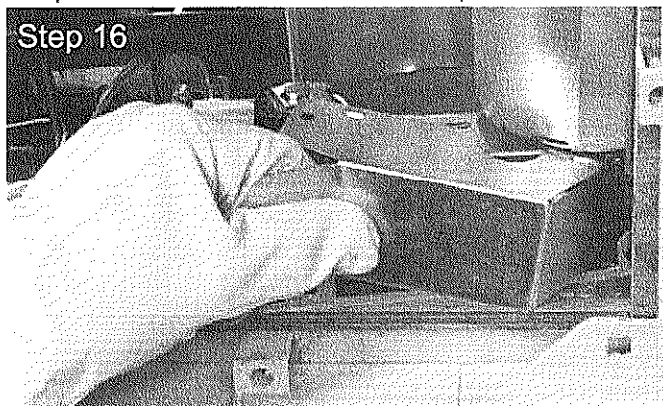
Step 15. Before reinstalling the burner cover, use a screw driver and raise the flue jacket slightly above its normal position. This will make the reinstallation of the burner cover easier.

Step 15



Step 16. Put the cover back in place.

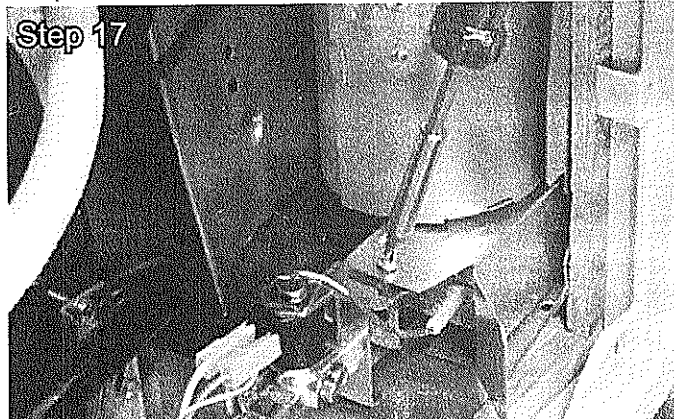
Step 16



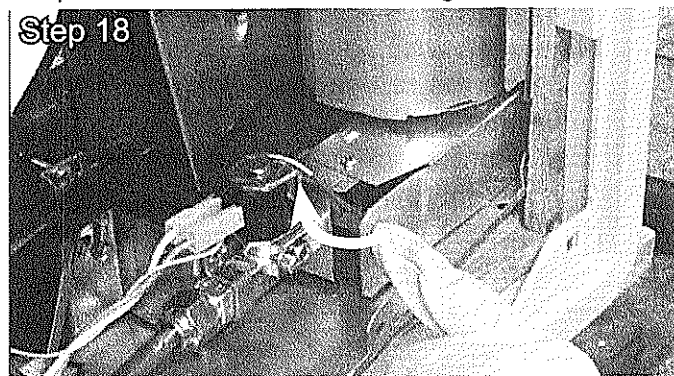
Step 16



Step 17. Reinstall the cover screw.

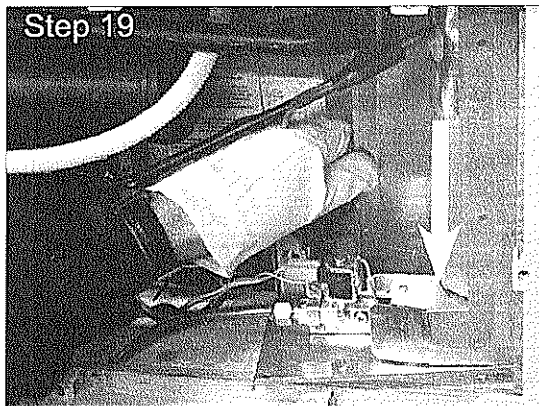


Step 18. Rebend tab to its original form.

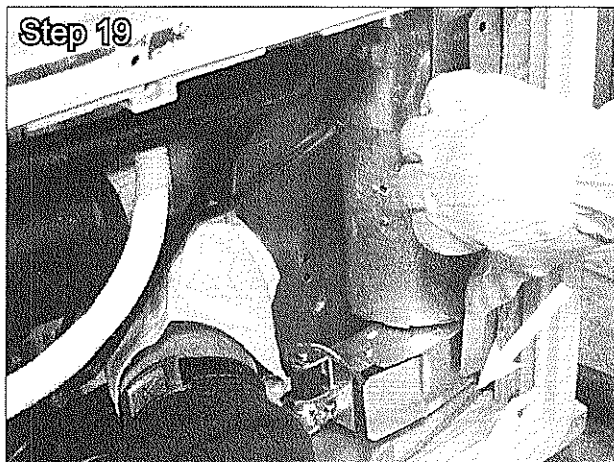


Step 19. Readjust the flue jacket to rest on top of burner cover. Adjust new boiler cover to rest inside the bottom plate at the bottom of refrigerator.

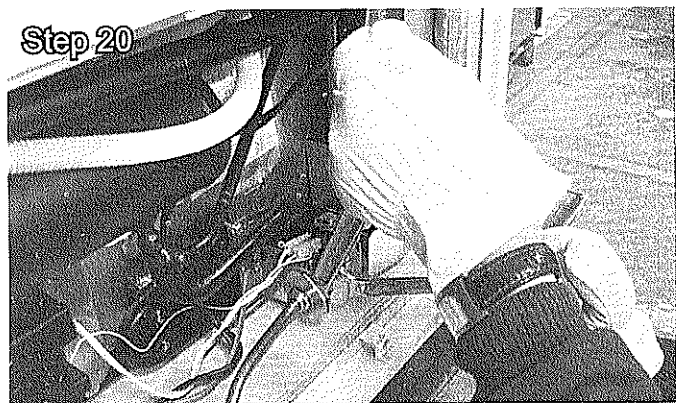
Step 19



Step 19



Step 20. Using two open end wrenches, make sure the LP gas connection is tight.

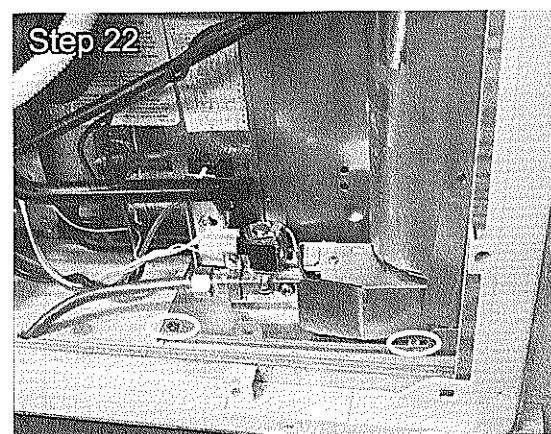
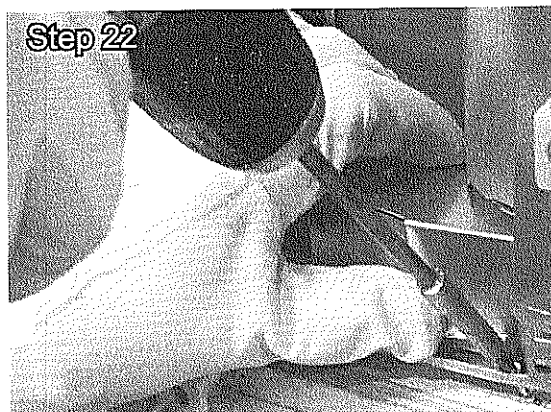
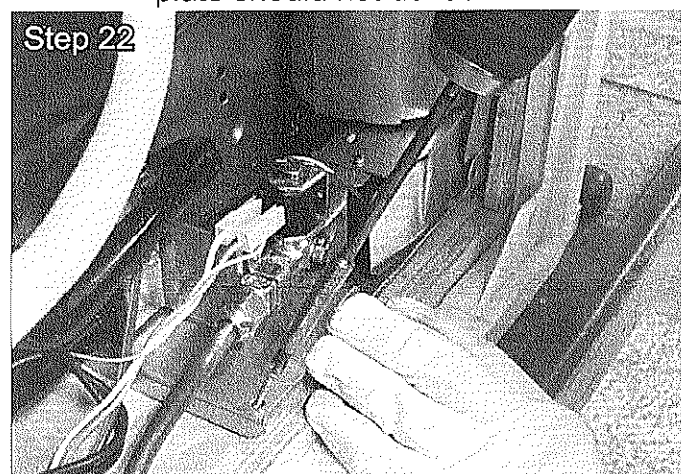


Step 21. Turn "ON" the LP gas tank. Make sure the refrigerator gas valve is also turned to the "ON" position. Using a calibrated manometer and a certified gas technician, conduct a pressure "DROP" leak test on the LP gas system per approved industry standard.

⚠ WARNING

Personal injury hazard. If the RV continues to indicate a gas leak by the decay of a manometer, the leak must be repaired before the gas system is allowed to be left on. Do not operate the RV with an LP leak at any location on the system.

Step 22. Secure the bottom plate with two supplied #8 x 1-3/8" screws, Item (16). Be careful not to over tighten. The bottom plate should not deflect or bend.



Step 23. Disconnect the incoming red (+) positive wire from the 12 VDC terminal block. To prevent accidental contact with other objects, cap wire with wire nut.

CAUTION

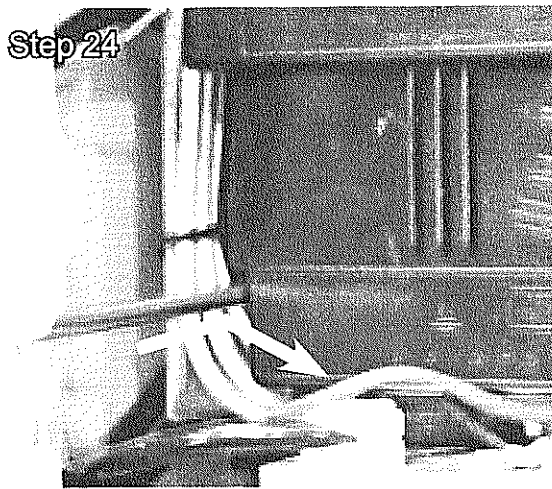
Property damage hazard. Cap 12 VDC (+) positive wire with a wire nut. Failure to heed this warning could cause property damage

Step 24. Remove the screw holding the power module cover in place (a). Use a flat-head screwdriver to pry open the plastic cover (b) and remove.

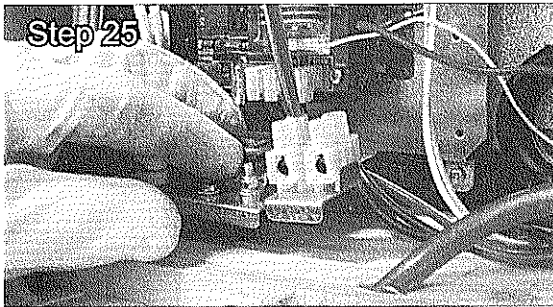
(a)



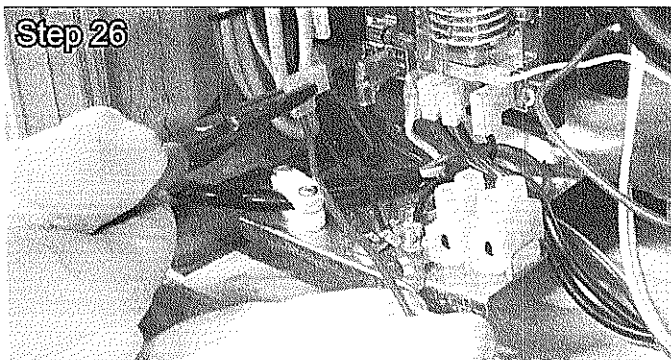
(b)



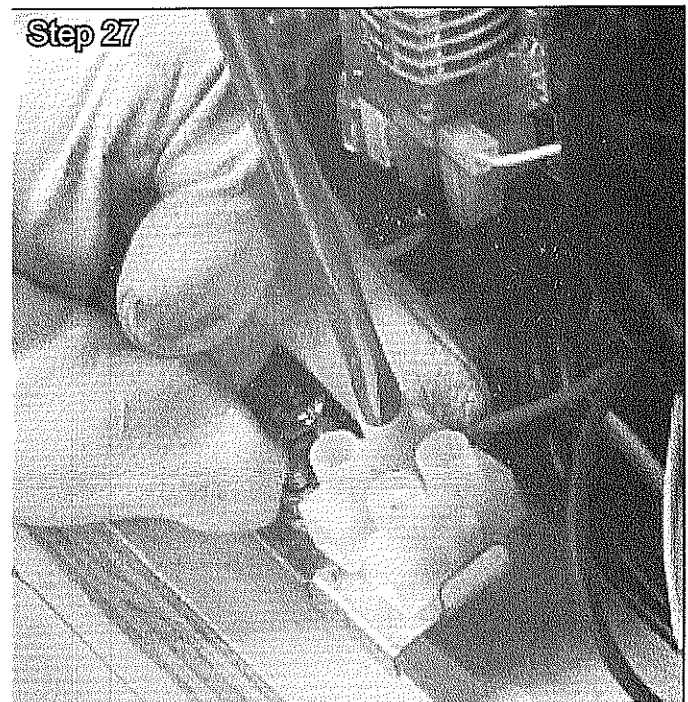
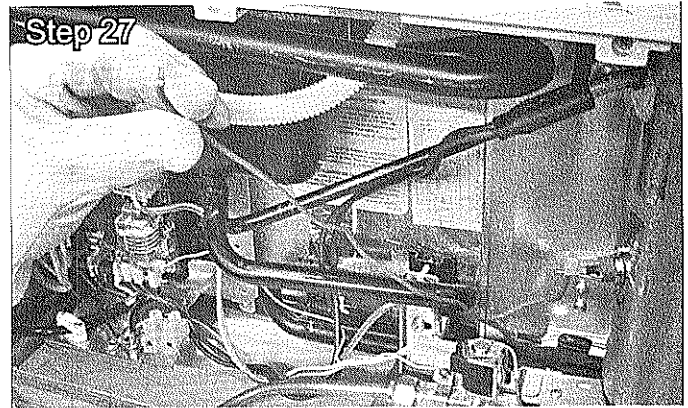
Step 25. Using a small screwdriver, disconnect the red (+) positive lead from the back side of the 12 VDC terminal block.



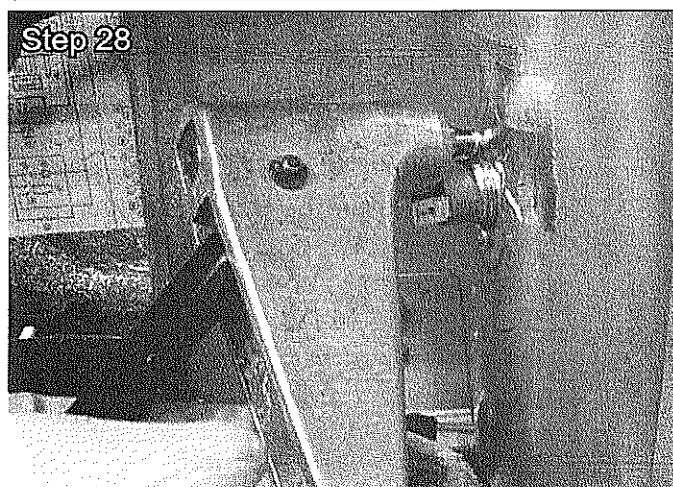
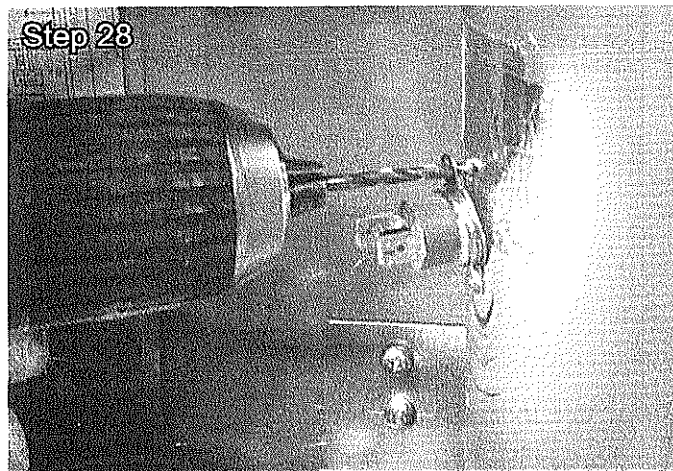
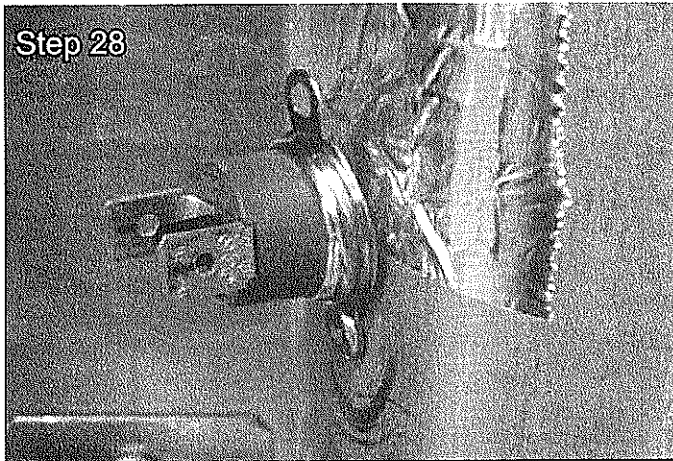
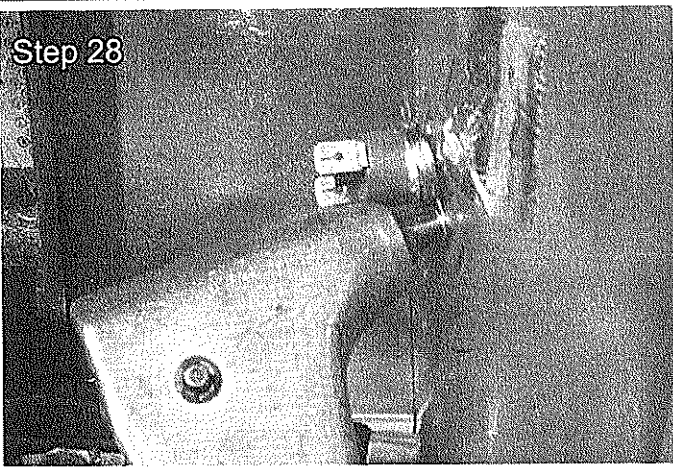
Step 26. Using a pair of pliers, disconnect the red positive (+) wire from position J4, on non universal power modules, or J1 on universal power modules. Discard wire. To determine which power module is installed, measure the power module cover. If it measures approximately 4 inches in height, this is a universal power module. If it is larger, it is a non universal power module. See Step 40 on how to measure the cover.



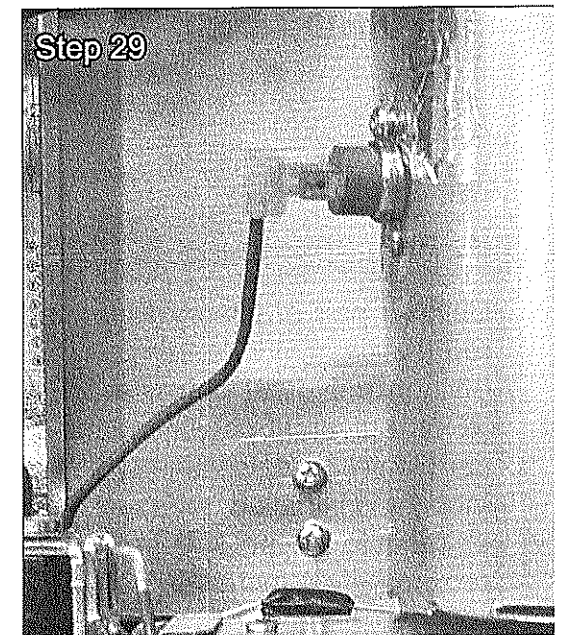
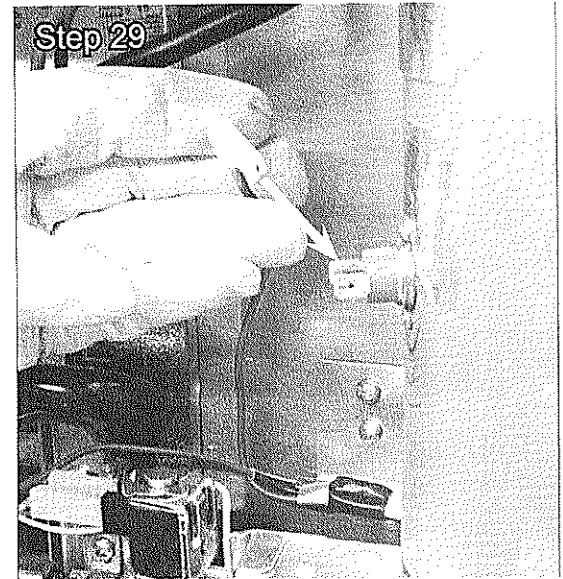
Step 27. Connect the uninsulated end of the thermal fuse, Item (13) to the positive (+) connection on the back side of 12 VDC terminal block.



Step 28. Install the thermo disc, Item (7), using two pop rivets, Item (8), and a pop rivet gun. Drill one or two holes in the embossed dimples in the flue jacket using the drill provided. There may be one hole already drilled in the embossed locations. If it has an existing hole fasten the thermo disc in this hole using one pop rivet. Then after drilling the second hole, fasten the thermo disc with the second pop rivet. Be careful not to dislodge the thermo disc from its holder.



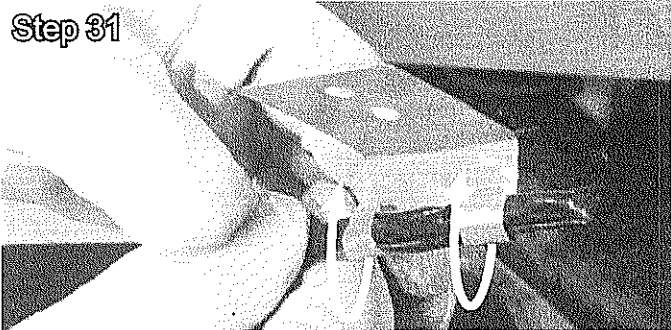
Step 29. Connect the end of the thermal fuse with the insulated flag, to one side of the thermo disc.



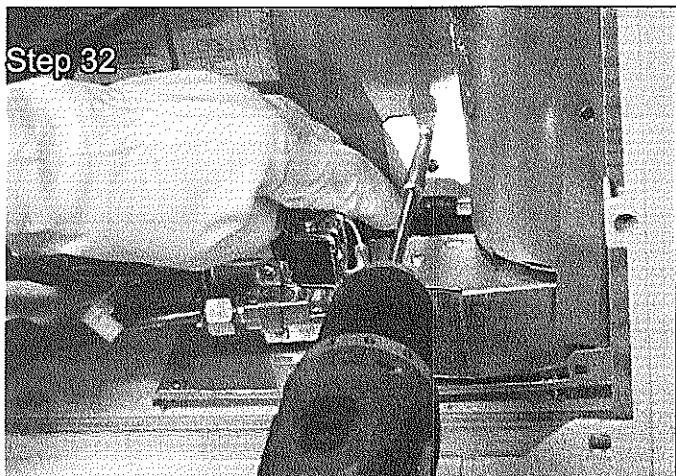
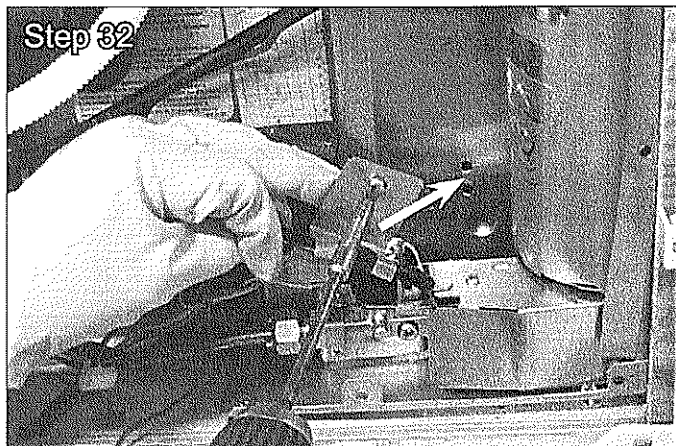
Step 30. Place the thermal fuse, Item (13), in the thermal fuse holder, Item (3), and make sure the sensor is located as shown in the photo. The thermal fuse should be just outside the securement tab.



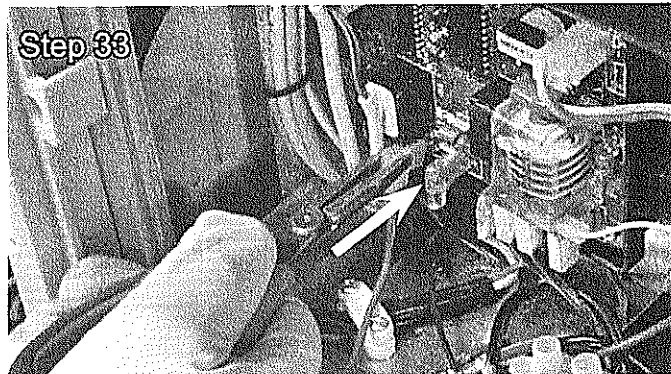
Step 31. Bend the two tabs on the holder to secure the thermal fuse.



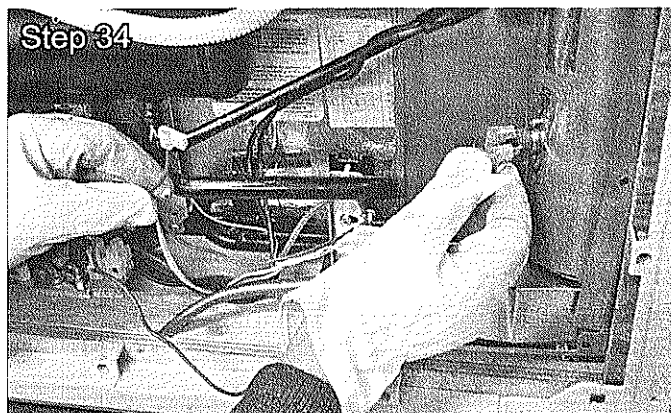
Step 32. Secure the holder to the new boiler cover with two #8 x 1/2" screws, Item (10).



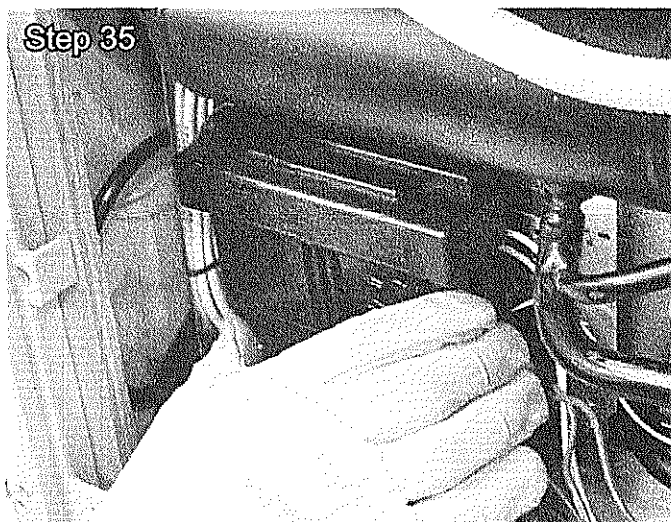
Step 33. Using a pair of pliers, connect one end of the supplied wire Item (12) to the J4 terminal on non universal power modules and J1 on universal power modules.



Step 34. Connect the provided wire, Item (12), to the other terminal on the thermo disc.

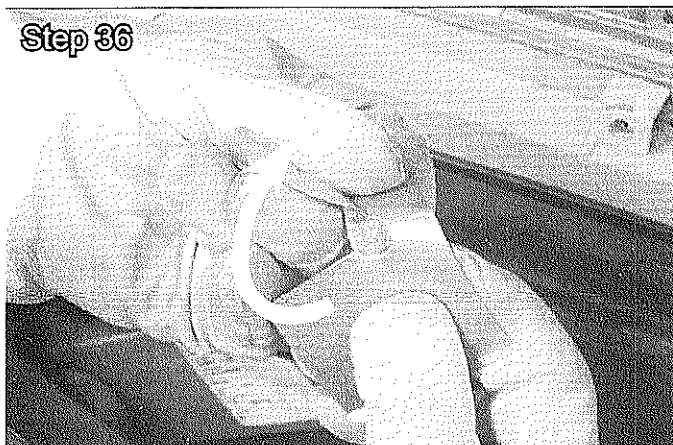
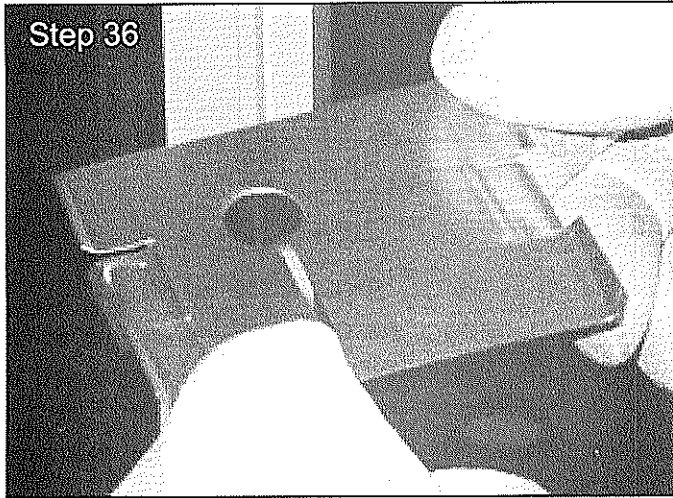


Step 35. Snap the power module cover back in place. Replace the screw.

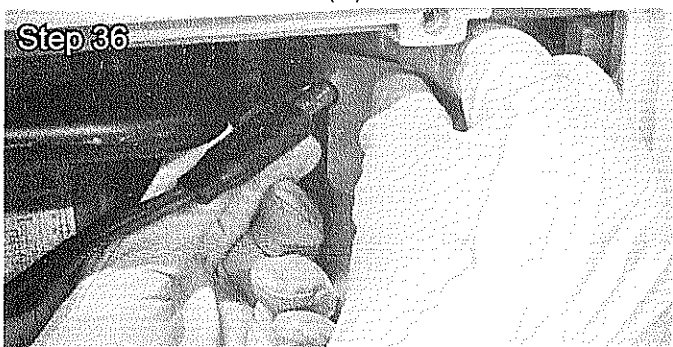


Step 36. Install the cover for the heating element, Item (4). Start by forming the cover (a) to fit into place (b). Insert the left tab and then the right (c). Press in with your fingers to make the cover fit as intended (d).

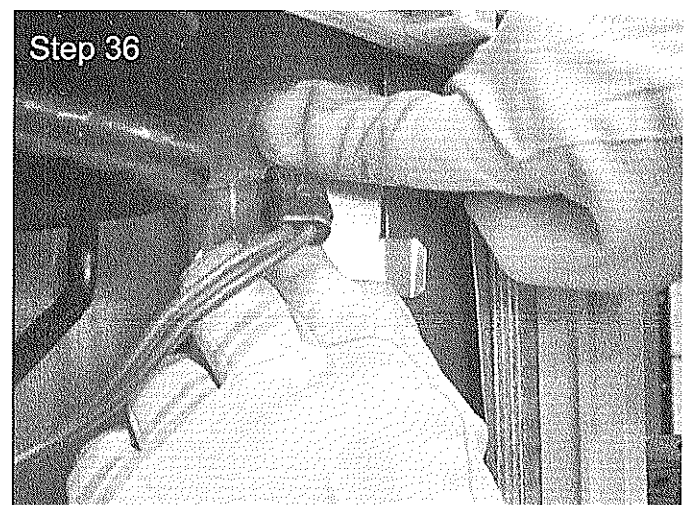
(a)



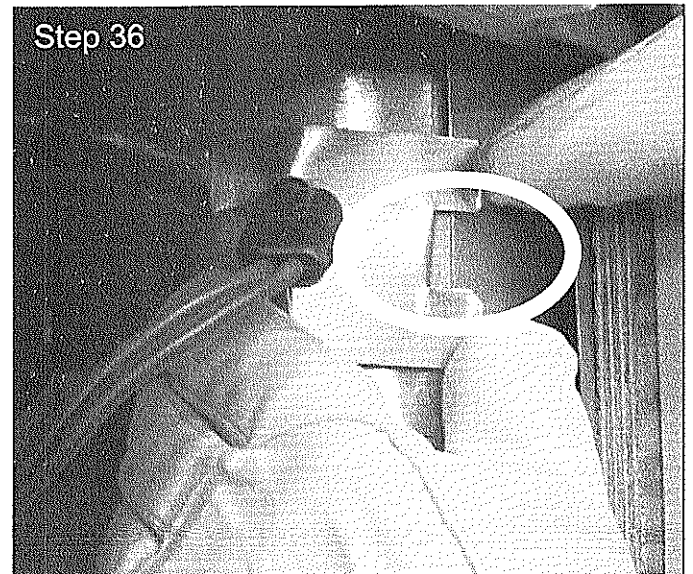
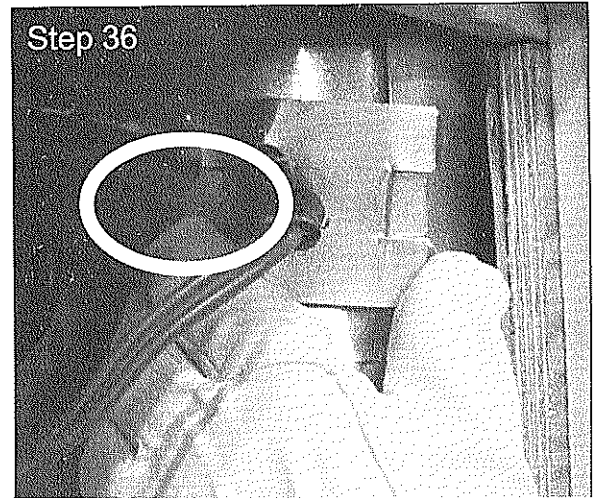
(b)



(d)



(c)



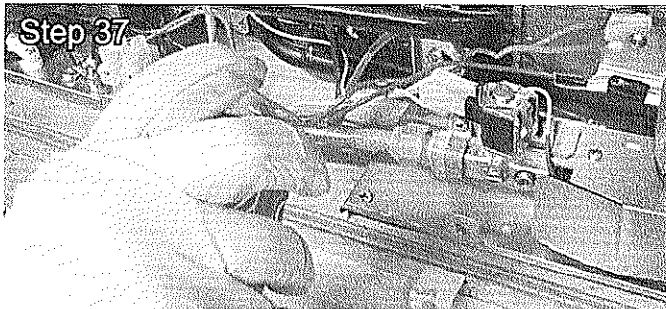


Step 36

Step 37. Complete the pressure drop test using the calibrated manometer. If there is a continued loss of pressure check for gas leaks using a commercial leak detecting fluid. Leaks are indicated by the presence of bubbles. If a leak cannot be stopped by tightening, replace part.

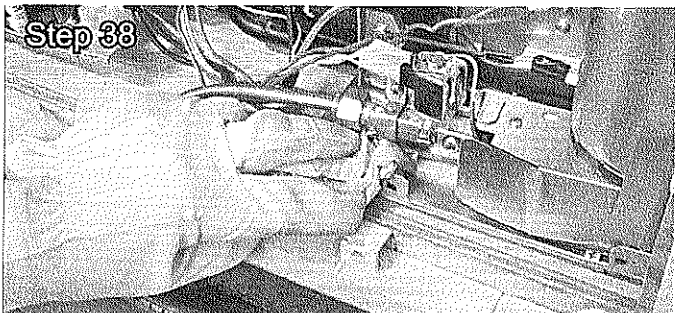
⚠ WARNING

Personal injury hazard. If the RV continues to indicate a gas leak by the decay of a manometer, the leak must be repaired before the gas system is allowed to be left on. Do not operate the RV with an LP leak at any location on the system.



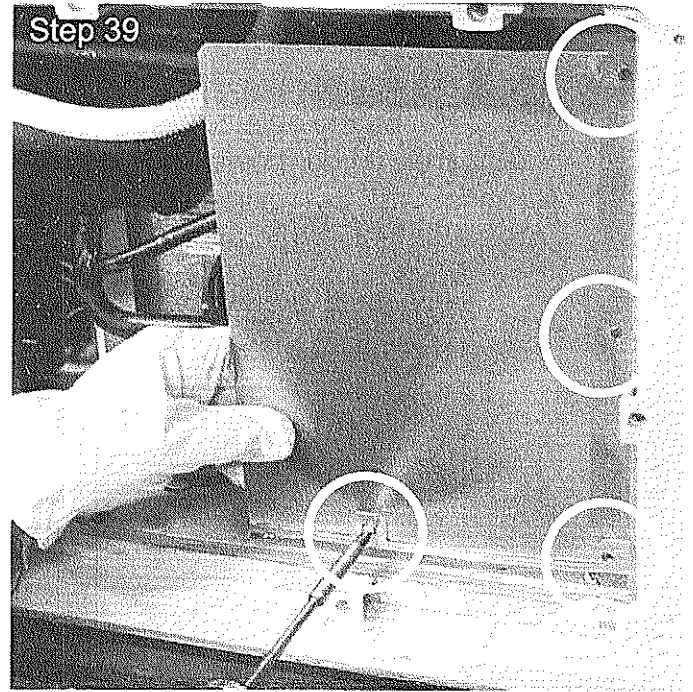
Step 37

Step 38. Wipe dry with a paper towel.

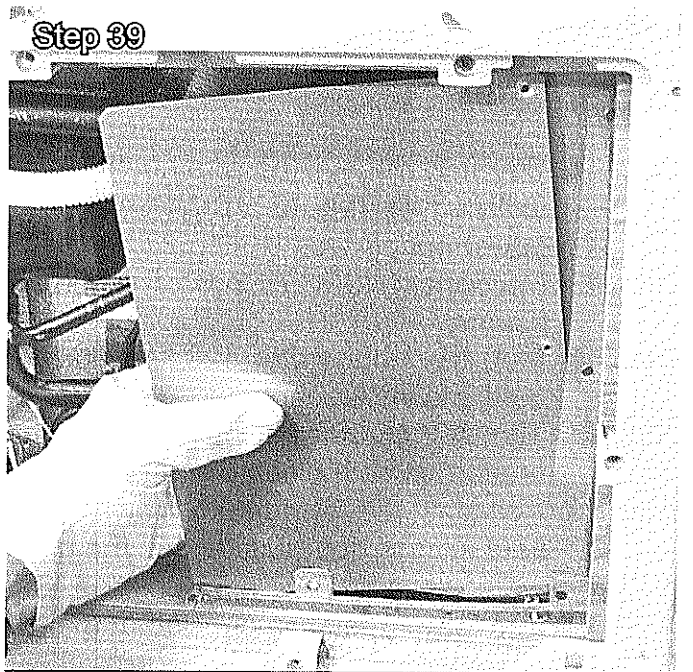


Step 38

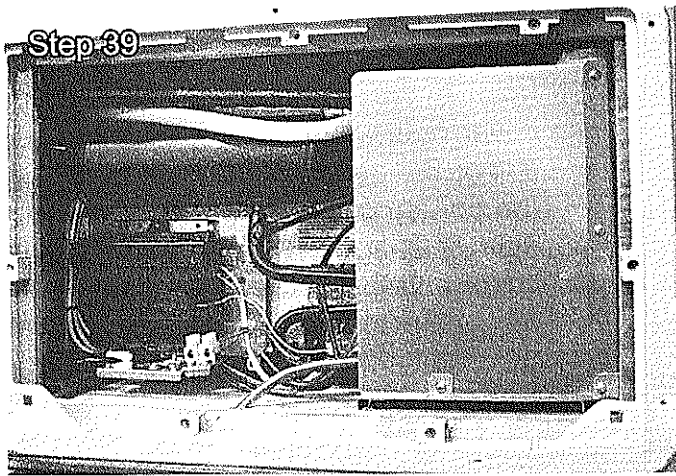
Step 39. Install the rear cover, Item (6). Align the holes in the boiler cover and the holes in the bottom plate with the rear cover holes and secure with four (4) # 8 x 3/8" screws, Item (11). Install the bottom corner fastener first. If it is difficult lining up the holes in the rear cover and the bottom plate, it may be necessary to relocate the bottom plate to facilitate the installation of the back cover.



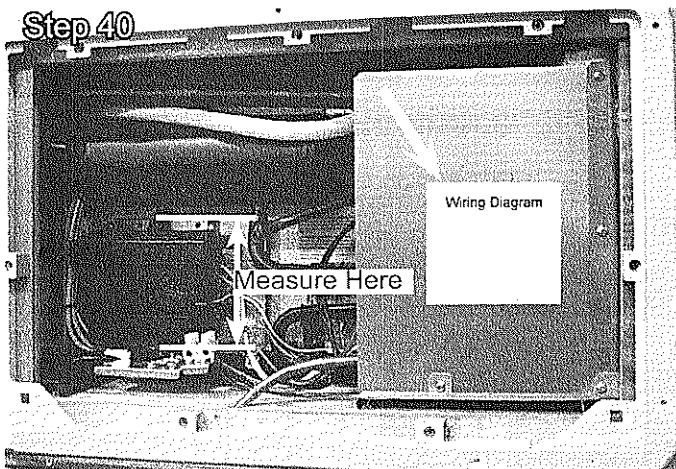
Step 39



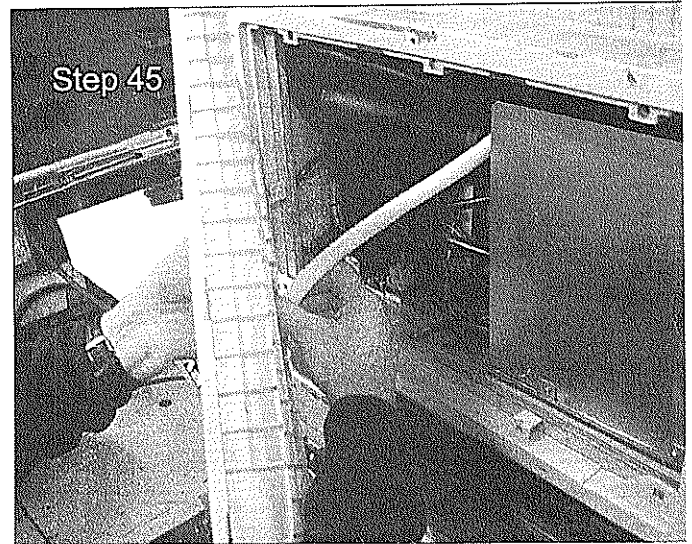
Step 39



Step 40. Place the appropriate wiring diagram, Item (15), on the outside center of the rear cover. If your power module cover measures approximately 4 inches (universal power module) use wiring diagram 3311221.000. If it is larger than 4 inches in height (non universal power module use 3311211.000.



- Step 41. Carefully remove the wire nut that was installed on the 12 VDC Positive (+) power supply wire in step 23.
- Step 42. Reconnect 12 VDC power supply at source.
- Step 43. Plug the refrigerator 120 VAC power cord into wall receptacle.
- Step 44. Turn refrigerator "ON" and check operation on both electric and gas.
- Step 45. Reinstall the refrigerator lower side vent access door. Make sure the drain water hose is in its right position. Before leaving, please check that the access door is securely engaged.



The service kit installation is now complete.